

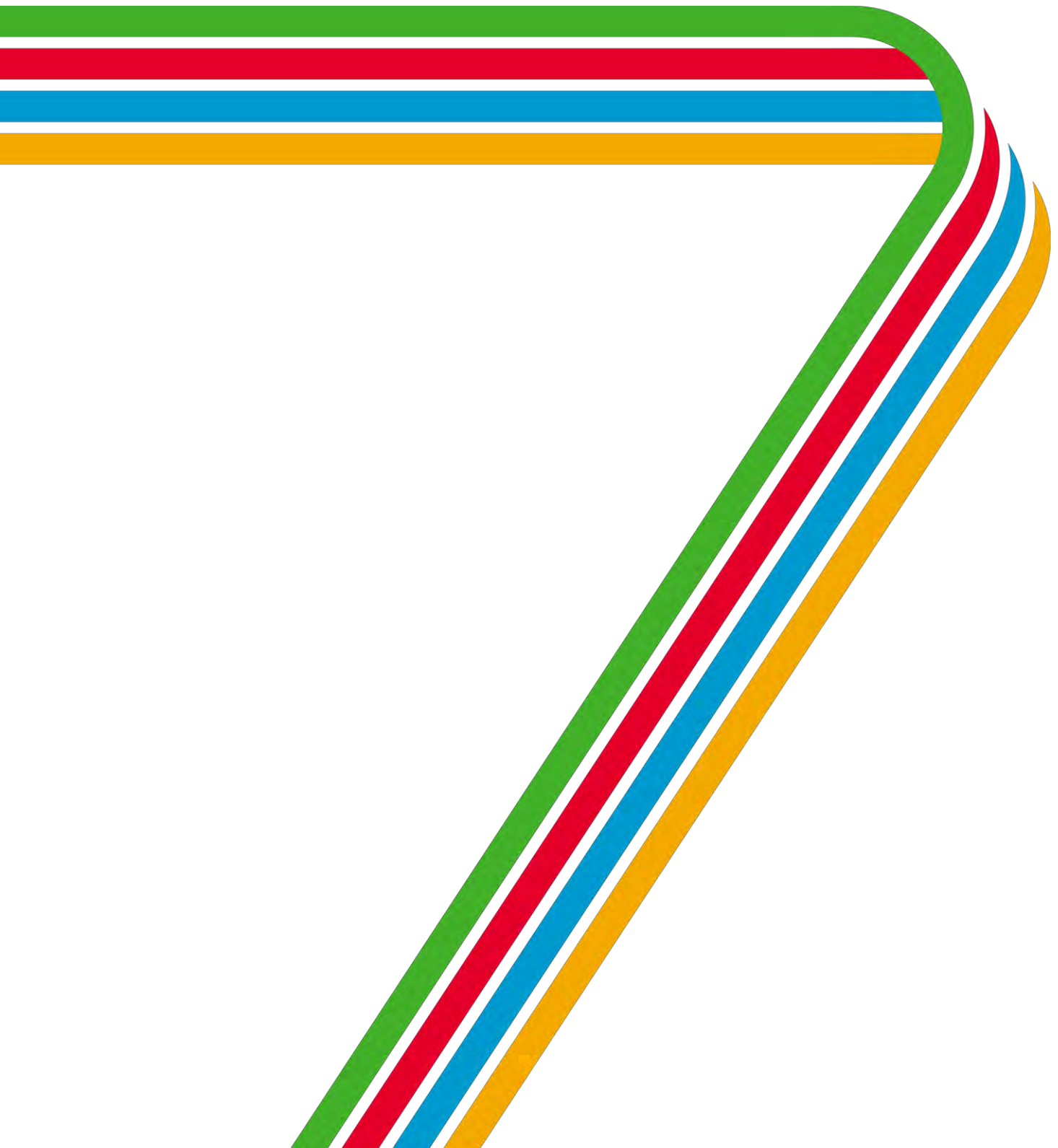


STOCKPORT
METROPOLITAN BOROUGH COUNCIL

**Stockport Metropolitan Borough Council Playing Pitch Strategy
Strategy Document**

Version 6.0

December 2019



SHAPING THE FUTURE OF SPORT



4global Consulting Terms of Reference

Estimates and forecasts contained within this report are based on the data obtained at that time and the accuracy of resultant findings and recommendations is dependent on the quality of that data.

The author(s) will not be held liable for any data provided by third party organisations as part of the Playing Pitch Strategy (PPS) delivery process. While the data and recommendations have been conscientiously reviewed through the PPS governance process followed throughout project delivery, it has not been possible for the author to independently review every element of data provided by third parties.

Table of Contents

1	Introduction and scope	4
1.1	Project scope and objectives	4
1.2	Methodology	5
1.3	The structure of the Strategy document	6
2	Strategic context	8
2.2	National Planning Policy	8
2.3	Local Context- Stockport	9
2.4	Population and Demographic Analysis	9
2.5	Physical Activity and Participation	12
2.6	Participation Trends and Rates	12
3	Key supply and demand findings	13
3.2	Football key findings	13
3.3	Cricket key findings	14
3.4	Rugby key findings	15
3.5	Hockey key findings	15
3.6	Lacrosse key findings	16
3.7	Artificial grass pitch key findings	17
4	Scenario testing and options appraisal summary	18
4.2	Scenario 1: Improvement of all football pitches from 'poor' to 'standard'	18
4.3	Scenario 2: Improvement of all 'poor' cricket pitches to 'good' quality pitches	19
4.4	Scenario 3: Increased use of 3G artificial grass pitches for affiliated football	19
4.5	Scenario 4: Loss of access to sites that are currently available for community use but do not have long term security of use	20
4.6	Scenario 5: Increased use of non-turf cricket pitches for training and matchplay	20
4.7	Scenario 6: Increased access to educational facilities, through educational establishments being made available for community use	21
4.8	Scenario 7: Impact of the potential removal of Bredbury St Marks, Cross Road and Outwood Road playing fields for relevant sports	21
4.9	Scenario 8: Re-instatement of lapsed/disused sites	22
4.10	Scenario 9: Impact of improved maintenance and / or drainage regimes at over-played rugby sites	23
4.11	Scenario 10: Impact of additional floodlighting on rugby sites	23
4.12	Scenario 11: Impact of update population GMSF population projections	23
4.13	Scenario test key findings and emerging recommendations	25
5	Strategic recommendations and action plan	28
5.2	Strategic recommendations	28
5.3	Borough wide and sub-area specific key issues	31
5.4	Disused/Lapsed sites	34
5.5	Action plan	41
6	Delivering the Playing Pitch Strategy	54
6.2	Keeping the PPS relevant and up-to-date	54
6.3	Using the PPS to identify the requirement for new pitches	55
7	Glossary of terms	57

1 Introduction and scope

1.1 Project scope and objectives

1.1.1 Stockport Metropolitan Borough Council (hereafter referred to as the Council, or SMBC) has commissioned 4global Consulting to prepare a Playing Pitch Strategy, to provide the Council with a clear evidence base and set of recommendations for future outdoor sports facility development across the study area.

1.1.2 A PPS is a strategic assessment that provides an up to date analysis of supply and demand for playing pitches (grass and artificial) in a local authority area. The strategy and the evidence base upon which it is based is delivered using national guidance and facility insight from specific Governing Bodies of Sport.

1.1.3 The assessment will focus on facilities used by the following sports:. These sports were identified as the key sports that utilise playing fields for grass-roots participation in Stockport.

- Football
- Cricket
- Rugby Union
- Hockey
- Lacrosse.

1.1.4 Within these sports, the strategy will seek as far as is practicable to include consideration of all forms of play, whether:

- Club and league based (formal) play and training
- Less formal programmed forms of the respective sports (e.g. turn up and play 'products' such as Rush Hockey, Mash-up Football, Last Man Stands Cricket, Cage Cricket and Touch Rugby)
- Informal and un-programmed play by groups of residents, workers, students, school friends (out of school).

1.1.5 The PPS provides a holistic analysis of outdoor sports facilities across the study area, leading to a comprehensive set of recommendations for the future development of facilities, in line with the needs of local residents and sports clubs.

1.1.6 The consultant team has worked with the Council to provide a strategy that is fit-for-purpose and addresses the specific issues and risks for the area. It is key that this Playing Pitch Strategy reflects the local context and enables the Council to maximise the amount of high-quality sporting provision for its residents, while understanding the need to meet planning and housing requirements. The Strategy will therefore aim to deliver against the following drivers:

- Contribution to the SMBC planning process through identifying deficiencies and needs within the study area
- Inform investment priorities and decisions which in turn can also help inform developer contribution decisions
- Align with the Greater Manchester Spatial Framework, as well as the sport and

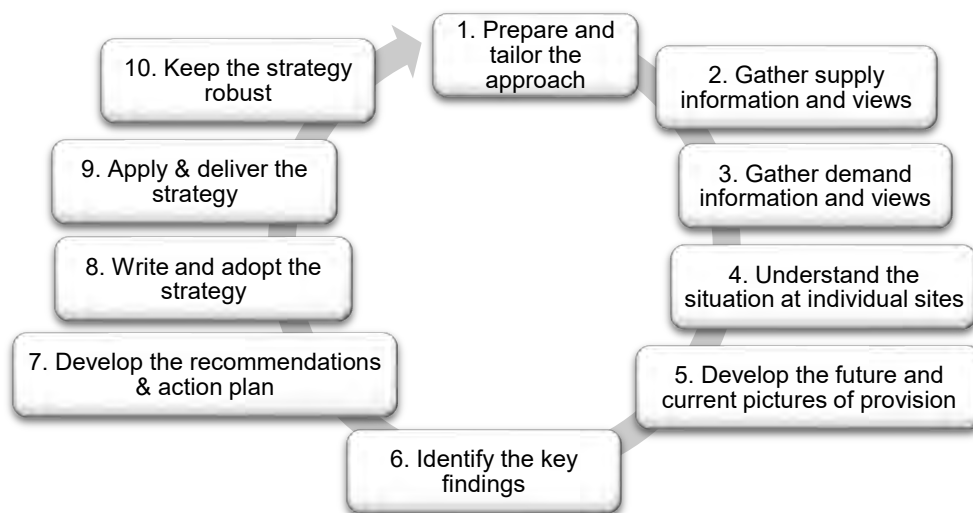
physical activity programmes that are currently being delivered across the region

- Recognition of the importance of outdoor physical activity and sport and the clear demonstration of how these should be prioritised within any development or regeneration project;
- Provision of an evidenced based approach and the management of a clear sign-off and governance structure for key stakeholders; and
- Evidence to support a wider review into sport and physical activity provision, including housing and population growth projected in the borough and neighbouring local authorities.

1.2 Methodology

1.2.1 The assessment methodology utilised for the PPS follows the published guidance from Sport England. The guidance used is the 2013 version, Playing Pitch Strategy Guidance – An Approach to Developing and Delivering a Playing Pitch Strategy¹. Figure 1 summarises the approach proposed in this guidance and is broken down into 10 steps.

Figure 1.1: Developing and Delivering a Playing Pitch Strategy – The 10 Step Approach (Sport England, 2013)



1.2.2 The findings in this report are based on data collected from several credible sources, including but not limited to;

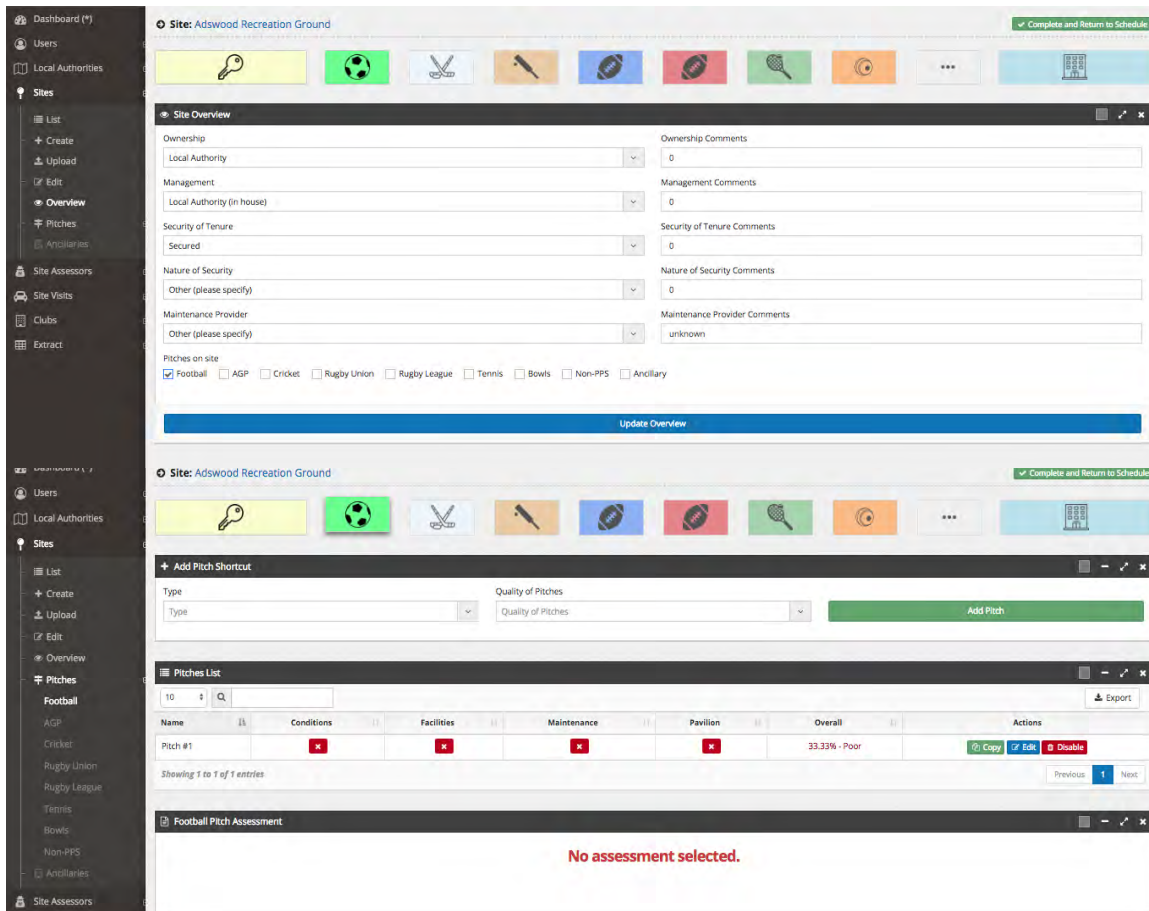
- Local authority and public policy strategic documentation;
- Sport England tools, including the Facility Planning Model (FPM), Active Places Power, the Active People Survey, Market Segmentation and the Sports Facility Calculator;
- Stakeholder consultation, including SMBC Officers, Sport England, Greater Sport, relevant National Governing Bodies of Sport, key user clubs; and
- Site visits, undertaken at all sites across the study area.

1.2.3 To facilitate information gathering and help ensure PPS reports are based on a robust evidence base, 4global has developed an online data entry and assessment platform (see example below), which contains all site and club information. This will enable the Council to

¹ <https://www.sportengland.org/media/3522/pps-guidance-october-2013-updated.pdf>

keep supply and demand information and the strategy up to date through to the end of the strategy and beyond.

Figure 1.2 - 4global's Online Playing Pitch Platform



1.2.4 A Project Steering Group comprising representation from the Council, Sport England and National Governing Bodies of Sport (NGBs) has guided the study from its commencement. At critical milestones, the Steering Group members have reviewed and verified the data and information collected to allow the work to proceed efficiently through each stage.

1.2.5 Raw data used as the evidence base is from the following time periods:

- Winter sport site assessments: November – December 2017
- Winter sport demand consultations: Consultations undertaken during the 2017/18 winter season, supported NGB affiliation data (where available)
- Summer sport site assessments: July 2018
- Winter sport demand consultations: Consultations undertaken during the 2018 summer season, supported NGB affiliation data (where available)

1.2.6 All raw data has been reviewed and signed off by the steering group before progressing to the detailed analysis stage. Where specific data has been updated to reflect the most recent changes to supply or demand, this is identified within the body of the report.

1.3 The structure of the Strategy document

1.3.1 The structure of the executive summary report is as follows;

- Section 1 - Introductory
- Section 2 – Strategic context
- Section 3 – Key supply and demand findings
- Section 4 – Scenario testing
- Section 5 – Recommendation and action plan
- Section 6 - Delivering the PPS
- Section 7 – Glossary of terms

1.3.2 In addition to the Strategy, a detailed report has also been produced, which provides a full evidence base for the analysis and a clear methodology for the project.

1.3.3 In addition to a detailed supply and demand audit for each sport considered within the scope of this project, the needs assessment contains a detailed strategic review of relevant local, regional and national policy. This strategic review is summarised overleaf, in Section 2 of the Strategy document.

2 Strategic context

- 2.1.1 This section summarises the most important policies and context that impact upon the strategy and its interpretation. It also gives an overview of the demographics of the study area, which provides contextual background to sport participation and the need for provision now and in the future.
- 2.1.2 Sport-specific strategic documents (such as national facility strategies) published by NGBs are included within each sport's section to provide more relevant context to each sport.

2.2 National Planning Policy

National Planning Policy Framework (NPPF)

- 2.2.1 The National Planning Policy Framework, 2019 (NPPF) sets out the requirement of local authorities to establish and provide adequate and proper leisure facilities to meet local needs. Paragraphs 96 and 97 outline the planning policy framework for the provision and protection of sport and recreation facilities:

“Access to a network of high quality open spaces and opportunities for sport and physical activity is important for the health and well-being of communities. Planning policies should be based on robust and up-to-date assessments of the need for open space, sport and recreation facilities (including quantitative or qualitative deficits or surpluses) and opportunities for new provision. Information gained from the assessments should be used to determine what open space, sport and recreational provision is needed, which plans should then seek to accommodate”.

- 2.2.2 Existing open space, sports and recreational buildings and land, including playing fields, should not be built on unless:
- An assessment has been undertaken which has clearly shown the open space, buildings or land to be surplus to requirements; or
 - The loss resulting from the proposed development would be replaced by equivalent or better provision in terms of quantity and quality in a suitable location; or
 - The development is for alternative sports and recreational provision, the benefits of which clearly outweigh the loss of the current or former use.

Protection, Enhancement and Provision of facilities

- 2.2.3 The key drivers for the production of the strategy as advocated by Sport England are to protect, enhance and provide sports facilities, as follows²:
- **Protect** sports from loss as a result of re-development
 - **Enhance** existing facilities through improving their quality, accessibility and management
 - **Provide** new facilities that are fit for purpose to meet demands for participation now and in the future.

² Further information is provided via Sport England's Planning Aims and Objectives guidance: <https://www.sportengland.org/facilities-planning/planning-for-sport/aims-and-objectives/>

2.3 Local Context- Stockport

- 2.3.1 Stockport is a Borough in Greater Manchester. It is 7 miles south-east of Manchester city centre, it also stretches from the Peak District National Park and borders the Cheshire plain. The built-up areas of the borough comprise a number of communities and townships which are broadly concentrated around the Stockport Town centre and eight district centres.
- 2.3.2 The district centres are Bramhall, Cheadle, Cheadle Hulme, Edgeley, Hazel Grove, Marple, Reddish and Romiley. The Borough of Stockport (hereafter known as the study area), has a population of 292,419 and an area of 126 sq. km.
- 2.3.3 81.5% of Stockport’s residents are economically active. Over 25% of the workforce in the borough has a higher education qualification, above both the regional and national average (Active Peoples Survey 2016). Emphasising the importance of relevant specific sports provision to the demographic, along with explaining the frequency of self-ran and funded clubs within Stockport.

2.4 Population and Demographic Analysis

- 2.4.1 The current and future population profile within Stockport and the locations of population growth are important to understand in planning for the future provision of sport and physical activity.

Population Projections

- 2.4.2 Table 2.1 below provides a summary of the key population and demographic trends for Stockport. It should be noted that this data is consistent with that used across the Built Facilities Strategy and Open Space Assessment, as well as the wider strategic planning work currently being undertaken by the Council.

Table 2.1: Population and demographics analysis for Stockport.

Sub Area	2018			2035 GMSF		
	M	F	Total	M	F	Total
Bramhall and Cheadle Hulme South	19,419	20,489	39,908	22,422	23,418	45,839
Cheadle	20,177	21,342	41,519	25,446	26,626	52,072
Heatons and Reddish	27,948	29,200	57,148	30,134	31,243	61,377
Marple	11,921	12,722	24,643	14,027	14,822	28,849
Stepping Hill	20,336	21,135	41,471	22,771	23,480	46,251
Stockport Central	29,347	29,711	59,058	31,531	31,733	63,263
Werneth	14,119	14,553	28,672	16,820	17,208	34,028
Total	143,267	149,152	292,419	163,151	168,530	331,679

- 2.4.3 It is key to note that the population statistics used to underpin this Playing Pitch Strategy were the most accurate available at the time of writing the needs assessment. Through the process of the Greater Manchester Spatial Framework (GMSF), this data has been refined, in line with the requirements for new housing across Stockport and the wider region.
- 2.4.4 The scenario section in this strategy document tests the potential impact of an updated set of GMSF data being used to estimate future requirements for sport and physical activity.
- 2.4.5 To provide greater detail on the specific trends and local population characteristics, table 2.2 provides an overall summary of the Stockport’s demographic profile.

Table 2.2: Summary of Stockport’s Localities – population, deprivation, health and sporting assets

Analysis area	Commentary
Sub-areas	The Borough of Stockport is a large local authority that sits within the wider region of Greater Manchester. The local authority has 7 committee area, which are used as sub-areas throughout this study for the purpose of splitting the supply and demand analysis into areas that can more accurately present the current and future position for sports facilities. The borough has the second largest economically active population in Greater Manchester.
Population Profile	Population of 292,418 (2018) of which 51% are female. The 2036 projected population is expected to increase to 331,679 (13% increase)
Ethnicity	94.2% White British, 5.8% BME
Housing	The latest GMSF proposes 15474 new homes projected by 2037, which is split into 11774 across the urban area and 3,700 across 7 sites in the Green Belt
Deprivation	Stockport is ranked 178 out of 326 local authorities in England on overall deprivation (where 1 is the highest level of deprivation). There are 136 LSOAs in Stockport, with 93 of them being amongst the most deprived 10% in England. This identifies that although there are areas of affluence across the borough, there are also areas of significant poverty.
Health	Stockport Physical Activity and Health statistics are slightly better than the national averages. 25,615 children and 103,883 adults fail to meet the minimum levels recommended for physical activity. Health inequalities in Stockport are also evidenced by the life expectancy gap for men (12 years) and women (10 years) between the wealthiest and poor wards across the study area. The health costs due to physical inactivity are also higher than the national average (Stockport’s Physical Activity Strategy 2015-2018). It is noted that the Active Communities Strategy is in draft form at the time of issue and will supersede the Physical Activity Strategy when it is issued and adopted.
Overall Implications for Future Sports Facility Provision	A growing population will mean increased demand for facilities; however, this is not necessarily for pitch sports unless programmes are in place for other formats of the game aimed at older people. The population is ageing which means facilities will need to be accessible and provide appropriately for older people e.g. day time access will be important because some elderly people do not like going out at night and travel by public transport may be easier during the day. Sports facilities need to be well-located to public transport and local communities, and be accessible and affordable, so all of the community have access, this is particularly relevant for multi pitch local authority owned sites. Despite obesity levels being relatively low, sports facilities need to continue to improve the level of childhood obesity and improve health in overweight adults across the Borough. There is still significant work to be done to improve childhood obesity rates across the study area. Sports facilities need to be welcoming and accessible to children and adults, to encourage and facilitate increased levels of physical activity, this is of significant relevance to ancillary facilities at grass pitch sites. Reducing adult obesity and increasing physical activity are areas of targeted improvement for Stockport. Sports facilities should provide opportunities to help increase levels of regular physical activity, to help address health inequalities across the borough.

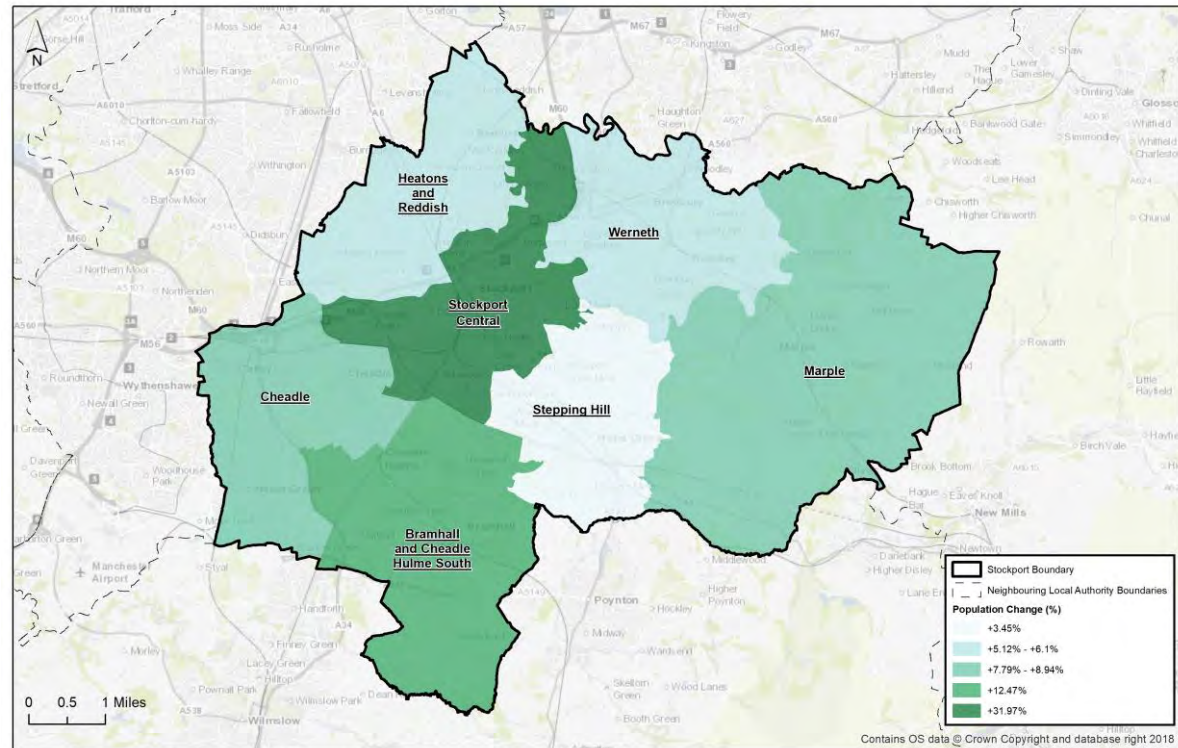
2.4.6 The population data overleaf indicates how the future population growth for the study area is projected to be distributed among the sub-areas. It is key to note that this figure uses the latest GMSF data, rather than the figures referenced in the needs assessment. This is due to updated data being

made available following the completion of the needs assessment element of the PPS. The scenario section of this document will be utilised to project the likely impact of this updated set of housing projections.

Figure 2.2 – Projected population change by Lower Super Output Area (GMSF January 2019)

Development in Stockport Town Centre

2.4.7 The map illustrates the significant population growth that is projected in the Stockport Central sub-area. The Town centre living framework has looked at areas for residential delivery within the town centre and an area of 130 acres to the west of the town centre was identified as one that has a number of under-developed, low-density brownfield sites. A ‘Mayoral Development Corporation’ has now been agreed through parliament. This will help accelerate the transformation of this area in the west of the town centre, creating a new urban village of up to 3,000 homes. Overall the Strategic Housing Land Availability Assessment (SHLAA) identifies land to accommodate around 5000 dwellings in the wider town centre.



Population Change by sub area (2018 - 2036) in Stockport, PPS



2.5 Physical Activity and Participation

The Value of Participation

- 2.5.1 The value of participation in sport and physical activity is significant, and its contribution to individual and community quality of life should not be under-estimated. This is true for both younger and older people; participation in sport and physical activity delivers:
- Opportunities for physical activity, and therefore more ‘active living’
 - Health benefits - cardio-vascular, stronger bones, increased mobility
 - Health improvement
 - Mental health benefits
 - Social benefits – socialization, communication, interaction, regular contact, stimulation
- 2.5.2 In addition, participation in sport and physical activity can facilitate the learning of new skills, development of individual and team ability/performance, and provide a ‘disciplined’ environment in which participants can ‘grow’ and develop.
- 2.5.3 The benefits of regular and active participation in sport and physical activity will be important to promote in relation to future sport, leisure and physical activity in Stockport. There is an existing audience in the Borough, which recognises the advantages of participation, and a latent community who are ready to take part. The sport, physical activity and leisure offer in the Borough can support the delivery of the desired outcomes across a number of Borough Strategic priorities and objectives.

2.6 Participation Trends and Rates

Current Participation Rates Across Stockport

- 2.6.1 In terms of the Public Health England definition for physical activity (150 minutes or equivalent of at least moderate intensity activity per week) 69.4% of adults aged 16+ years are classed as being active.
- 2.6.2 The Sport England Active Lives survey shows that participation levels are consistently higher than the regional and national levels. As the Active Lives survey is a new way of measuring physical activity (following the replacement of Active People in 2015), there are only two datasets available for analysis. While this makes trend analysis difficult, Table 2.3 below shows that Stockport is consistently above the county, regional and national figures for physical activity, with a significant increase shown over the period of the Active Lives Survey.

Table 2.3: Sport England Lives – proportion of ‘Active’ people (150+ minutes a week).

Year	Stockport	Greater Manchester (CSP)	North West	England
2015 – 2016	64.8%	59.4%	60.7%	62.1%
2016 - 2017	69.4%	61.4%	61.4%	61.8%

3 Key supply and demand findings

- 3.1.1 This section summarises the key findings identified within the needs assessment, which should be used as the evidence base for this strategy. A comprehensive supply and demand analysis has been undertaken for all sports across the study area, with the project steering group engaged at all stages of the process.
- 3.1.2 The following section provides a summary of the key findings for each of the sports analysed within the main report. The format of these tables follows the five key questions that are asked as part of the PPS Guidance Document for Stages A – C of the process.

3.2 Football key findings

Table 3.1 – Key PPS findings for football in Stockport

Key Question	Analysis
What are the main characteristics of the current supply and demand for provision?	<p>The quality of football provision across the study area has remained relatively consistent since the previous Playing Pitch Strategy (2015), with the pitch stock consisting of a large amount of education and local authority owned and managed facilities, in addition to a small number of privately or commercially operated facilities.</p> <p>While consultations with clubs across the study area indicate that there are issues with pitch quality, site assessments undertaken as part of the PPS show that 79% of pitches are of standard quality, with 18% identified as poor and 3% as good. This proportion of good quality pitches is low, especially considering the significant investment into pitches by the Council over the past 5 years, and is reflective of the high amount of overplay across all pitch types.</p> <p>The level of demand has also stayed at a relatively consistent level, with major clubs continuing to grow, offset by the contraction of demand for smaller affiliated adult's teams. The total number of teams across the study area is 648 across all age groups, based on Football Foundation affiliation data and further consultation and research. Both the supply and demand for football facilities is dominated by the Heaton and Reddish Sub Area, which is home to the majority of the large clubs, as well as a number of the strategic football sites.</p>
Is there enough accessible community use provision to meet current demand?	<p>The current position for available pitch provision illustrates that there is a total deficit of mini 5v5 and youth 11v11 pitch provision of -17.5 MES and -17 MES respectively. Despite this, there is spare capacity for Adult 11v11 pitch provision of 32 MES across the study area, with the largest amount of spare capacity in the Cheadle sub-area.</p> <p>The spare capacity shown in the adult pitch typology shows a false position, as much of the deficit shown in the youth 11v11 pitch typology is actually serviced by adult 11v11 provision. This means that young adults are playing on the wrong sized pitches with goals that are not of the appropriate size.</p> <p>For the current position there is also a small amount of spare capacity during the peak period for youth 9v9 (2.5 MES) and mini 7v7 (0.5 MES) provision.</p>
Is the provision that is accessible of sufficient quality and appropriately maintained?	<p>While several clubs have identified issues with drainage and maintenance, the overall quality of facilities and the robustness of maintenance regimes is standard (79% of pitches are of standard quality, with 18% identified as poor and 3% as good). There is a small number of poor quality sites, however these are typically local authority sites that are owned and maintained by the external contractors and have limited or no formal football demand.</p>
What are the main characteristics of the future supply and demand for provision?	<p>With a significant projected growth in population between the current position and the future position in 2035, there is a projected increase of 88 teams across all age groups. The largest growth is projected in the age groups that utilise youth 11v11 and mini 7v7 pitch typologies, which make up 89% of the growth.</p> <p>In addition, 36.5 MES of displaced demand has been identified across the study area, as well as 30.5 MES of latent demand. This additional demand is included within the calculation for the future position, as there is an aspiration for pitch provision across the study area to meet all future need and enable residents to become more active more often.</p> <p>The largest growth is projected to be realised in the youth 11v11 and mini 7v7 pitch typologies, with a total growth of 42.5 MES and 21.5 MES respectively, between now and 2035.</p> <p>It is key to note that to meet this demand, significant changes to the stock of pitches across the study area will be required. Some of this change is already in progress, with developments at the</p>

Key Question	Analysis
	Seashell Trust being an example. The expected impact of these changes will be explored in greater detail within the strategy document.
Is there enough accessible and secured community use provision to meet future demand?	The future supply and demand analysis for all accessible pitch provision shows there is a deficit of accessible provision across all pitch typologies apart from adult 11v11. The greatest deficit for the future position is projected to be in the youth 11v11 pitch typology, which is influenced by the growth expected in the age groups (see box above and the lack of existing provision). In practice, it is likely that this deficit will be addressed through a combination of grass and artificial pitch provision. Potential solutions for addressing the deficit will be explored in greater detail as part of this Strategy document.

3.3 Cricket key findings

3.3.1 This section summarises the findings from the cricket analysis, which will form the basis of the recommendation and action plan section for Stockport.

Table 3.2 – Key PPS findings for cricket in Stockport

Key Question	Analysis
What are the main characteristics of the current supply and demand for provision?	<p>The quality of cricket provision across the study area is good, with provision in the Heaton and Reddish and Bramhall and Cheadle Hulme School sub-areas scoring highly on assessment. The lowest rated elements of cricket provision across the study area are artificial wickets, which is reducing the ability of clubs to train and play on non-turf pitches during the season. The demand for cricket across Stockport is high. The area has 19 clubs, 68 senior teams and 109 junior teams.</p> <p>Women and Girls cricket in the Stockport area is currently thriving. Although this was not identified as part of the 2018 audit, recent consultation has identified women and girls teams playing in the Cheshire Girls Cricket League and the Cheshire Women's Cricket League. In total, the following women specific participation occurred in the most recent (2019) season:</p> <ul style="list-style-type: none"> • 8 cluster clubs in the Stockport Borough • 9 girls teams playing in the Cheshire Girls Cricket League • 3 girls festivals with an average 14 teams for U9s and U11s • 9 teams in the Cheshire Womens Cricket League • 5 Womens Softball Festivals in the Stockport area
Is there enough accessible community use provision to meet current demand?	<p>Overall, there is a significant deficit of provision that is available for community use, with 249 matches per season (MPS) of deficit across the study area. The study area with the most severe current deficit is Werneth (-105 MPS), followed by Stepping Hill (-58 MPS), with the supply and demand analysis taking into account the different quality ratings of each site.</p> <p>There is very limited peak period spare capacity for grass cricket provision across the study area, with only William Scholes Playing Fields and Mellor Sports Field having spare capacity during the peak period. William Scholes PF does, however, represent an opportunity to address some of the deficit of provision across the rest of the study area.</p>
Is the provision that is accessible of sufficient quality and appropriately maintained?	<p>Overall, the provision is of good quality, with facilities in Heaton and Reddish areas scoring particularly highly (77%). In contrast, the Stockport Central Sub Area does not score as highly, with changing/pavilion facilities and artificial wickets (on the square) being unfit for purpose (49% average quality score)</p> <p>Maintenance is largely undertaken by individual clubs, either through the use of a paid grounds man or through club volunteers. 4 of the sites are also managed by the Council, with the quality of these sites typically being lower than club-managed sites.</p> <p>Clubs have identified a need to improve practice net facilities and ancillary provision</p>
What are the main characteristics of the future supply and demand for provision?	<p>The future demand for cricket is projected to increase significantly across the study area, with a total growth of 164 MPS dominated by junior demand (144 MPS). The largest growth of cricket is projected to come in the Bramhall & Cheadle Hulme South sub-area (56 MPS), which is driven by significant population growth and latent demand for girls cricket.</p> <p>With the projected increase in demand from both population growth and conversion of latent demand, as well as the expected growth that will be realised following the success of All Stars Cricket, Softball Cricket and South Asian initiatives, the increase in demand is likely to have a significant impact on the level of demand for cricket across Stockport.</p> <p>Women's cricket is a priority area for the ECB. The cluster club programme, mentioned in the current supply and demand commentary above, aims to providing a network of opportunities for</p>

Key Question	Analysis
	women and girls to play the game, will help CCB to ensure that there is an offer for any female at any age within 15 minutes of where they live in the Stockport area. From this the plan is to increase the number of competitive teams entering their respective leagues and expand the offer to girls to include a hardball league. In addition, there is a plan to create a competitive women's softball league feeding in to the CWCL.
Is there enough accessible community use provision to meet future demand?	Given the significant current deficit for available and secured cricket provision across the study area, alongside the population growth that is forecast across each of the sub-areas, it is clear that there is not enough accessible provision to meet future demand for grass roots cricket. There is a future deficit across the study area of 413 MPS, which is most significant in the Werneth (129 MPS) and Bramhall and Cheadle Hulme South (101 MPS) sub-areas.

3.4 Rugby key findings

3.4.1 This section summarises the findings from the rugby analysis, which will form the basis of the recommendation and action plan section for Stockport.

Table 3.3 – Key PPS findings for rugby in Stockport

Key Question	Analysis
What are the main characteristics of the current supply and demand for provision?	The quality of grass pitch provision across the study area for rugby is mixed, with five key clubs all utilising multi-pitch sites that have a combination of artificial and natural drainage. Given the number of clubs in the study area, the demand for rugby is strong, with all clubs reporting a consistent level of demand in the recent past, as well as identifying plans to develop and grow in the future. As identified in the AGP chapter of this needs assessment, there are two WR22 3G AGP's located in the study area. The facility at Burnage RFC allows the club to train on artificial grass, therefore reducing the amount of wear and tear on grass provision used for matches.
Is there enough accessible and secured community use provision to meet current demand?	There is a large deficit for secured and accessible rugby provision across the study area, with all sub areas showing an undersupply of available and secured grass pitches. When considering sites that are available for community use, there is a current deficit of -12 MES match equivalent sessions (MES), which is projected to worsen to -21 MES over the period of the local plan. The sub-area that has the highest deficit is Heatons and Reddish, which has -8 MES of deficit over the week.
Is the provision that is accessible of sufficient quality and appropriately maintained?	With the exception of Marple Rugby Club, the remaining 4 clubs have standard or good rated maintenance procedures, which ensures grass pitches are maintained to an adequate quality. Given the amount of rain in the region, as well as the high levels of demand, this is not enough to ensure pitches are of a high quality all year round, with wet weather and high demand causing waterlogging at some points during the year. Manchester RUFC and Stockport RFC both have artificial (pipe) drainage installed on the respective 1 st team pitches, with the remaining pitches relying on natural drainage.
What are the main characteristics of the future supply and demand for provision?	The future trend for rugby demand indicates that demand is likely to increase by 9 MES across the study area, with the highest projected demand coming in the Bramhall and Cheadle Hulme sub-area. Women and girl's rugby demand is projected to increase, in line with the RFU's national strategic priorities. Consultation has indicated that the key priority for clubs and the RFU is increasing the capacity of existing club sites so clubs are able to cater for increased demand on sites that already have a deficit of provision.
Is there enough accessible and secured community use provision to meet future demand?	The future demand for rugby is projected to increase across the study area, with the deficit for provision likely to increase to -22 MES over the lifetime of the strategy. Further capacity is required to meet the current and future needs of local residents, especially in the Heatons and Reddish, Marple and Bramhall and Cheadle Hulme South sub-areas. The strategy contains detailed scenario testing later in the document, in order to establish whether the current pitch stock could better meet the needs of local clubs and participants, if maintenance, drainage or ancillary facilities were to be improved.

3.5 Hockey key findings

3.5.1 This section summarises the findings from the hockey analysis, which will form the basis of the recommendation and action plan section for Stockport.

Table 3.4 – Key PPS findings for hockey in Stockport -

Key Question	Analysis
What are the main characteristics of the current supply and demand for provision?	The quality of provision across the Study Area for hockey in terms of surface condition is average, however, access to pitches on unsecured sites is an issue. The Life Leisure facility is vital to provision in Stockport and is utilised as a home ground by Stockport Bramhall Hockey Club, which has a large amount of demand for senior and junior hockey. Additional sand-based provision is available at Priestnall School; however, this is not secured for community use and is not suitable for competitive hockey matches. The sand-based pitch at Cheadle Hulme High School is utilised by Wilmslow HC, which represents imported demand from neighbouring Cheshire West Local Authority.
Is there enough accessible and secured community use provision to meet current demand?	There is a deficit of 7 hours of facility availability identified at peak times (Saturday), when considering all demand in the study area but only available and secured provision. The largest club in the study area, Stockport Bramhall HC, has not identified a shortage of provision; however, this may change should the club experience growth in the near future.
Is the provision that is accessible of sufficient quality and appropriately maintained?	The existing facility at Life Leisure Bramhall is maintained by the site operator and club, with key investment being carried out by the club in recent years. The site has struggled with vandalism, which has impacted the overall quality of the facility.
What are the main characteristics of the future supply and demand for provision?	Future demand for hockey in Stockport is projected increase by 5 teams, through a combination of population growth and the conversion of latent demand. It is important to recognize that the sport has also enjoyed significant growth since the Women's gold medal at the Rio Olympics, which it is hoped will stimulate further growth at both junior and adult age groups across the country. England Hockey has also identified an objective to growth the informal side of the game, through programmes and facilities that have low barriers to entry and encourage both ex-players and new participants. As this element of the sport grows, there will be an increasing need for grass-roots pitch provision.
Is there enough accessible and secured community use provision to meet future demand?	The projected increase in demand cannot be satisfied by the existing stock of secured provision. Further secured provision is required in order to meet demand, however this is likely to be achieved through increasing security at one of the existing sites, such as Werneth High School. The future peak time analysis indicates that over the lifetime of the local plan period (2035), Stockport Bramhall Hockey are likely to have a worsening deficit of capacity for demand during the peak period. As a result, it is recommended that additional sites are sought and secured for long-term community use, to not only diversify the supply of hockey in Stockport, but also to address a potential increased future shortage in supply during the peak period. The Strategy Document will combine the findings from the AGP and Hockey needs assessment sections to provide clear guidance as to how many AGP's are required over the Local Plan period.

3.6 Lacrosse key findings

3.6.1 This section summarises the findings from the lacrosse analysis, which will form the basis of the recommendation and action plan section for Stockport.

Table 3.5 – Key PPS findings for lacrosse in Stockport

Key Question	Analysis
What are the main characteristics of the current supply and demand for provision?	The main characteristics of lacrosse provision in Stockport is that multi sports sites dominate provision. Often, pitches are reconfigured around existing sports and consequently there is an impact upon the quality of provision. The sites, typically, have issues with drainage on site along with issues of anti-social behaviour and the ancillaries, this is typical of provision across all sports in Stockport.
Is there enough accessible and secured community use provision to meet current demand?	There is currently insufficient provision and the provision present isn't of suitable condition. There are only two facilities across the study area that currently provide Lacrosse pitches and have spare capacity. The sites with the greatest deficit of supply are the Cheadle Sports Club (-2.5 MES) and Mellor Sports Club (-5.5 MES), with a total deficit across the study area of -5 ME (taking into consideration other positive values at other sites).
Is the provision that is accessible of sufficient quality and	In terms of quality, the majority of maintenance of lacrosse pitches in Stockport is carried out by volunteers, however key issues regarding a lack of suitable drainage and equipment is highlighted in the consultations above. Anti-social behaviour identified at a number of

Key Question	Analysis
appropriately maintained?	sites also reduces the overall quality of provision and reduces the ability of clubs to provide players with a high-quality experience.
What are the main characteristics for future supply and demand for provision?	Although there is not a set and agreed way of calculating future supply and demand for Lacrosse, consultation with England Lacrosse indicates that demand for the sport is likely to grow over the Local Plan Period, especially as Stockport is a key growth area for all levels of the game,
Is there enough accessible and secured community use provision to meet future demand?	Given that there is not currently sufficient provision of lacrosse pitches across the study area and that further additional demand is expected over the period of the strategy, it is clear that there is not sufficient provision to meet future demand. As there is not an agreed method for calculating future supply and demand, it is not possible to accurately quantify the deficit, however it is expected that the most sustainable and effective way of addressing the deficit is through a combination of new grass pitch provision, artificial grass pitch provision and improved maintenance on existing sites.

3.7 Artificial grass pitch key findings

3.7.1 This section summarises the findings from the artificial grass pitch analysis, which will form the basis of the recommendation and action plan section for Stockport. It should be considered alongside the hockey, football and rugby sections of the document, as there is considerable overlap where these sports use artificial surfaces for training and match play.

Table 3.6 – Key PPS findings for artificial grass pitches in Stockport

Key Question	Analysis
What are the main characteristics of the current supply and demand for provision?	The quality of AGP provision across the study area is high, with 69% of facilities rated as good and only 11% rated as poor. As per the consultation with Cheshire FA, the Manchester FA, the RFU and England Lacrosse, the use of artificial grass pitches for all sports has grown over the past 5 years and continues to do so. One factor behind this growth is the growing demand for central venue football leagues, which brings clubs and teams from a wide area to single venues to play and compete. When considering this demand alongside the requirement for consistently high sand-based facilities for hockey training and matchplay, the overall demand for artificial provision is high.
Is there enough accessible and secured community use provision to meet current demand?	The current supply and demand analysis for 3G AGP pitch provision, including both full sized and small sided provision, shows a deficit of 6 full sized 3G AGP's. This deficit takes into consideration the capacity provided by small sided provision 3G AGP provision and incorporates demand for football, rugby and lacrosse. It should be noted that if only full sized provision is included within the supply and demand calculation, there is a deficit of 10 full sized 3G AGP's (as identified previously in the chapter). Given the amount of small sided provision across the local authority, however, it is important that these facilities are factored into calculations and therefore the deficit taken forward to the strategy is for 6 full sized 3G AGP's.
Is the provision that is accessible of sufficient quality and appropriately maintained?	While several clubs and sites have identified issues regarding surface condition, the overall quality of facilities is good. This is particularly true in the case of 3G AGP provision, as 19 of the 23 pitches in the study area are identified as good, with the remaining 4 standard. There are a small number of poor-quality artificial pitches, however these are largely education-managed sites that have limited or no formal demand.
What are the main characteristics of the future supply and demand for provision?	There is expected to be a need for four further full sized AGPs within Stockport, in addition to the current deficit of 6 full sized 3G AGPs. In line with the strategic objectives of the Football Foundation, FA, RFU and England Lacrosse, it is expected that the demand for 3G AGP provision will increase over the period of the local plan, as there is an ambition to improve the overall playing experience of participants by moving more grass-roots participation onto artificial surfaces.
Is there enough accessible and secured community use provision to meet future demand?	The future supply and demand analysis for secured and accessible pitch provision shows there is a significant total deficit for secured provision equivalents across all AGPs, equating to 8 full sized 3G AGPs. This future deficit consists both the current deficit of 6 full sized 3G AGP's and the future requirement for an additional 2 full sized 3G AGPs, driven by population growth, unmet demand and displaced demand. It should be noted that this future demand has been updated from the needs assessment, to reflect the latest GMSF data and the most recent modelling, as shown in scenario 11.

4 Scenario testing and options appraisal summary

- 4.1.1 The supply and demand analysis undertaken in each of the previous sections provides a clear view of the capacity for sports facilities across Stockport, based on the existing supply of facilities and the demand for these facilities from residents, both now and in the future.
- 4.1.2 This data provides an accurate evidence base, on which future planning and investment decisions can be made, using the guidelines outlined in the 'Delivering the Strategy' chapter of the strategy.
- 4.1.3 To complement the analysis that has been undertaken in each of the sport-specific sections, further analysis has been undertaken for a number of key scenarios, which have been identified by the project steering group throughout the development of the PPS.
- 4.1.4 These scenarios assess the potential impact of changes to the existing pitch stock or demand profile for each sport, both positive and negative. For instance, scenarios have been included to test the potential impact on the overall football pitch stock, should greater use be made of artificial grass pitch provision for training and match play.
- 4.1.5 For each of the scenarios identified, a short summary is provided to explain the results of the scenario test and the key outcomes that have been considered within the recommendations and action plan. **Further detail is included with Appendix H.**

4.2 Scenario 1: Improvement of all football pitches from 'poor' to 'standard'

- 4.2.1 To identify potential solutions that could help to address the deficit of grass football pitch provision across the study, this scenario tests the potential positive impact of increasing the quality score of all *poor* pitches, to an overall rating of *standard*. If achieved, this would increase the carrying capacity of existing pitch provision, as pitches would be able to cope with a higher volume of demand. It should be noted that this scenario is different from the equivalent scenario tested for cricket (below). This is due to the fact that it is not realistic to improve the quality of all 'poor' football pitches, in order for them to be recognised as 'good' quality pitches. This is due to the very significant amount of capital work that would be required to improve drainage infrastructure, as well as the large amount of ongoing maintenance that would be required.
- 4.2.2 The test indicated that if all pitches that are currently identified as poor were increased to standard, an additional 34 MES of carrying capacity would be created on a weekly basis, with the greatest impact (12 MES) possible on adult 11v11 pitches. For further detail on how MES relate to pitch provision, please see the table in section 6 of this document.
- 4.2.3 The key outcome of this scenario test is that there is an opportunity to increase capacity in the existing pitch stock. It is key that this is seen as the first priority, as it represents the most cost-effective way of increase carrying capacity across football provision.

4.2.4 The action plan identifies the specific sites that should be focused on and invested in, in order to improve maintenance and drainage, therefore increasing the carrying capacity.

4.3 Scenario 2: Improvement of all 'poor' cricket pitches to 'good' quality pitches

4.3.1 As in the previous football specific scenario, this scenario identifies the potential increase in capacity that could be achieved for cricket, should *poor* pitches be improved to *good*. By improving the quality of three sites that have been identified as poor quality, there is a total potential improvement of 155 matches per season. Should this be achieved in full, it has the potential to reduce the overall study area deficit from 249 matches per season to 94 matches per season.

4.3.2 A key site to focus on as part of the output of this scenario is Offerton Cricket Club, which has potential additional carrying capacity of 85 match equivalents of carrying capacity, should the facility quality be improved.

4.4 Scenario 3: Increased use of 3G artificial grass pitches for affiliated football

4.4.1 During the last decade, 3G FTPs have played an increasing role within the national game. They are regarded by the Football Association (FA) and Football Foundation (FF) as the optimum facility for training by clubs. In recent seasons, they have also become more popular for competitive matches. With this in mind, before developing the recommendations and action plan for this PPS, a key scenario has been looked at to help with understanding what demand there may be for full size floodlit 3G FTPs in the study area, if increased amounts of play were to take place on them.

4.4.2 In line with national priorities, to get more young people playing football on 3G AGP's this scenario considers the likely total demand if all youth 9v9 and mini demand that is currently being played during the period of peak demand is moved from grass pitches to 3G AGP.

4.4.3 While it is understood that in practice it is unlikely that 100% of demand will transfer for these age groups, it provides a valuable assessment of the potential impact on pitch capacity, if the FA and FF are successful in changing player and coach behaviour and moving clubs from natural grass to 3G AGP provision.

4.4.4 The analysis indicates that should all mini and junior (7v7 and 9v9) matchplay be moved to 3G AGP, then 19.8 (rounded to 20) full sized facilities would be required in order to meet demand.

4.4.5 There are a number of key assumptions associated with this scenario, such as the fact that all junior clubs will be willing to move matchplay onto artificial provision, as well as adopting flexible kick-off times to allow for all demand to be played on a limited number of pitches. In reality, the supply model is likely to be a mixed model between artificial and grass pitch provision, with the total recommended number of additional pitches identified in the recommendation section of this document.

4.5 Scenario 4: Loss of access to sites that are currently available for community use but do not have long term security of use

- 4.5.1 The needs assessment identified a significant number of sites across all sports that are currently available for community use but do not have long term security of use through a formal agreement.
- 4.5.2 This represents a risk to grass roots pitch provision, as land owners and site operators may choose to make the site unavailable for community use, due to a range of reasons such as financial unsustainability or demand for alternative use.
- 4.5.3 The following potential impact has been identified by the scenario test, which tests the potential impact of all unsecured sites being made unavailable for community use over the life time of the Local Plan:
- Football: 38 MES reduction in carrying capacity
 - Cricket: 133 matches per season reduction in carrying capacity
 - Rugby: 2 MES reduction in carrying capacity
 - Hockey: 6 hours reduction in carrying capacity per week
- 4.5.4 These figures show the significant impact that would be felt by Cricket and Football, should unsecured sites be lost from the pitch stock across the study area. As a result, it is imperative that the Steering Group and stakeholders aim to improve the overall security of pitch provision, either through security use agreements, club leases or equivalent written agreements between landholders and users or the Council.

4.6 Scenario 5: Increased use of non-turf cricket pitches for training and matchplay

- 4.6.1 The needs assessment has identified a deficit of matchplay and training provision across all types of cricket in the study area. Consultation with local clubs, the Cheshire County Cricket Board and the England and Wales Cricket Board (ECB) has demonstrated the requirement for investment into grass roots provision that meets the current and future needs of residents.
- 4.6.2 The ECB has a clear strategic objective to improve matchplay and training provision that is accessible to all of the cricket community, as well as those that could be interested in become involved in the sport³.
- 4.6.3 This scenario tests how the supply and demand picture for grass roots cricket would change if greater use of non-turf pitches (NTP) is facilitated across the study area. The scenario identifies that if 5 non-turf pitches at Woodley Cricket Club, Bredbury St Marks Cricket Club, Cheadle Sports Club, Romiley Cricket Club and Hazel Grove Cricket Club are all used to their full capacity of 60 matches per season, there is an opportunity to increase the capacity

³ It should be noted that inclusion of a non-turf wicket for the management of fixtures would alleviate overlap issues, however this would be subject to league rules and minimum pitch specifications (the overall ground size is 115m which can accommodate a nine strip square – see ECB S9 pitch layout). Where possible the addition of a non-turf wicket could be considered for junior cricket (up to U15s) and potentially lower league cricket which will take the burden off remaining wickets due to intensification of use. This option should be considered on a site by site basis.

of the current pitch stock by 300 matches per season. This improves the overall deficit from 413 matches per season to 113 matches per season.

4.7 Scenario 6: Increased access to educational facilities, through educational establishments being made available for community use

- 4.7.1 There are a number of educational establishments across the study area that have access to high quality grass roots pitch provision that is not available for community use.
- 4.7.2 The needs assessment identified a number of establishments that are not available for community use. This scenario evaluates the potential opportunity that relates to these educational establishments opening facilities for community use. The list of educational facilities that are included within this scenario are included within Appendix H:
- 4.7.3 The table below shows the future supply and demand position for football, should the sites above be made available for community use.

Table 4.1: Impact of educational sites being made available for community use

Analysis Area	Future position with current availability	Future position assuming increased availability of education sites	Projected change
Cheadle	-36.0	-35.0	1.0
Heatons and Reddish	-12.0	-12.0	0.0
Marple	-17.0	-16.0	1.0
Bramhall and Cheadle Hulme South	-13.0	-11.0	2.0
Stockport Central	5.0	6.0	1.0
Werneth	-34.0	-34.0	0.0
Stepping Hill	-4.0	-3.0	1.0
Stockport (Total Local Authority Area)	-110.0	-104.0	6.0

- 4.7.4 The analysis illustrates that there would be positive impact to the overall position, with 6 additional MES of supply during the peak period made available for community use.
- 4.7.5 It is key to note that it is not realistic for all of these sites to be made available for community use, due to external factors such as lack of maintenance resource or commercial decisions from individual establishments. As part of Stage E, it is recommended that each of these establishments are reviewed, to understand the appetite of site operators to make facilities available for community use.

4.8 Scenario 7: Impact of the potential removal of Bredbury St Marks, Cross Road and Outwood Road playing fields for relevant sports

- 4.8.1 Through consultation with the steering group and local clubs, three sites that currently provide grass roots provision have been identified as being at risk of loss.
- 4.8.2 This scenario tests the potential impact on the relevant sports, for each of the sites, by analysis the projected supply and demand position for pitch provision.
- 4.8.3 As demonstrated in the needs assessment, the loss of Outwood Road would have an impact on grass pitch provision for football, while Bredbury St Marks is projected to have an impact on grass roots cricket provision.

4.8.4 The impact of the potential site loss is a reduction in 3MES of football provision at Outwood Road and 40 matches per season at Bredbury St Marks playing fields.

4.9 Scenario 8: Re-instatement of lapsed/disused sites

4.9.1 The needs assessment has identified a large number of sites as being either lapsed or disused, with previous pitch provision for either football or cricket.

4.9.2 The needs assessment has also identified a deficit of overall provision across all sports included in the scope, as well as a lack of spare capacity during the peak period.

4.9.3 Following consultation with the project steering group, it has been decided to test the possible impact of bringing **all currently lapsed or disused** sites back into use, to understand the total opportunity to reduce deficits of pitch provision across the local authority. A full list of the lapsed and disused sites that have been included within this analysis are include in Appendix H.

4.9.4 The tables below shows the future supply and demand position for all relevant sports, should these sites be brought back into community use over the period of the local plan.

Table 4.2: Impact of bringing lapsed and disused sites back into use

Pitch typology	Future position with current availability	Future position assuming increased availability of lapsed/disused site	Projected change
Football - Adult 11v11	21.0	30.0	+9.0
Football - Youth 11v11	-60.5	-58.5	+2.0
Football - Youth 9v9	-13.5	-6.5	+7.0
Football - Youth 5v5	-21.0	-20.0	+1.0
Football - Mini 5v5	-36.0	-31.0	+5.0
Rugby - Adult pitch	-22	-19	+3
Cricket - Grass wicket	-413	-313	+100
Hockey – AGP	-4	-4	0
Lacrosse – Grass pitch	-9	-9	+0

4.9.5 The table indicates that even with the positive impact of bringing football pitches of all sizes back into use, there is still a significant deficit of provision across the study area. It is interesting to note that the majority of the positive change, should pitches be brought back into use in line with the size that they were when they were lost, the majority of additional capacity would come from adult 11v11.

4.9.6 Given that the needs assessment has demonstrated the greatest deficit is in other pitch typologies, it is recommended that for any site that is brought back into use, the pitch sizes are reviewed, and new pitches are created to reflect the local need.

4.9.7 The table also indicates that for rugby, cricket and hockey, bringing back disused and lapsed sites into use will have a positive impact on the overall supply and demand balance.

4.9.8 For rugby and cricket, will there will be increased capacity, it will not be enough to address the current deficit of provision. Alternative investment is therefore required to meet the future needs of residents.

4.9.9 For lacrosse, no lapsed or disused sites were identified as previously having lacrosse provision, therefore there is no impact expected, unless new pitches are provided as part of any pitch re-provision.

4.10 Scenario 9: Impact of improved maintenance and / or drainage regimes at overplayed rugby sites

4.10.1 There are currently a number of sites with rugby provision across the study area that are overplayed, due to a combination of high demand, poor maintenance and insufficient infrastructure. This scenario tests the impact of improving the maintenance of these sites, to assess whether investment in this area would have on the current and future position.

4.10.2 The scenario models the projected impact of improving all pitches across club sites to a maintenance rating of M2 (Good). Given that only one pitch across the study area (Manchester RFC) currently has a maintenance rating of M2, the projected impact is significant. Overall, it is estimated that improving maintenance across club sites will increase carrying capacity by 14.5MES, with greatest projected benefit at Marple RFC and Stockport RFC with 4.75MES for each site.

4.10.3 This analysis shows that should all club sites that are currently overplayed improve pitch maintenance to a good standard, there will be a significant improvement in the overall balance across the study area. The scenario test indicates that only Heaton Moore RUFC would remain overplayed, which is influenced by a large amount of demand being serviced by only 2 adult pitches.

4.11 Scenario 10: Impact of additional floodlighting on rugby sites

4.11.1 There are currently a number of sites across the study area that are overplayed, due to a combination of high demand, poor maintenance and insufficient infrastructure. The previous scenario identifies the potential impact of improving maintenance across all sites that are currently overplayed.

4.11.2 This scenario evaluates the potential impact of increasing the amount of floodlit provision at key clubs sites across the study area. By increasing floodlighting, it is assumed that additional capacity will be providing for floodlighting and matchplay, therefore reducing the overplay at sites.

4.11.3 This scenario demonstrates the positive impact on carrying capacity that floodlight investment could have. It also shows that three of the club sites are still likely to face a deficit of provision, even with increased floodlighting. It is therefore important that there is a combined effort to improve both the maintenance and the floodlighting, in order to bring sites back to a balanced position.

4.12 Scenario 11: Impact of update population GMSF population projections

4.12.1 The Greater Manchester Spatial Framework (GMSF) is a strategic planning document which is being prepared by the Greater Manchester Combined Authority and the 10 GM Authorities. It will be a plan which seeks to ensure that GM protects and enhances blue and green infrastructure and has the right land in the right places to deliver the homes and jobs needed

up to 2037, along with identifying the new infrastructure required to achieve this. As well as identifying strategic allocations for housing and employment, the GMSF sets out policies on a range of topics to ensure that GM becomes as well known for the quality of its environment as for its economic success.

- 4.12.2 If it is adopted it will form part of the Development Plan for each of the ten local planning authorities and therefore will form part of the decision-making template for planning decisions in the borough. It will not remove the need for Local Plans, nor will it impose targets on Stockport which are not based on evidence.
- 4.12.3 National planning policy states that in order to support the Government's objective of significantly boosting the supply of homes, it is important that a sufficient amount and variety of land can come forward where it is needed. To determine the minimum number of homes needed, strategic policies should be informed by a local housing need (LHN) assessment, conducted using the standard method in national planning guidance.
- 4.12.4 The LHN for Stockport and across GM has been derived using the government's latest proposed methodology. From there a target has been set. The key figures for Stockport are set out below:
- GMSF Housing land supply figure for Stockport 15,474
 - Base line supply 11,774 (homes to be delivered in the urban area)
 - Homes to be delivered in the Green Belt equate to 3,700.
- 4.12.5 It is key to note that this GMSF data represents a slightly lower amount of growth than was factored into the needs assessment modelling, as GMSF data was not available at the point of analysis. Taking the above housing land supply figure of 15,474 and an estimated 2.3 dwellings per person⁴, this equates to a total growth of 35,590. The total projected population growth used to model future need within the needs assessment is 39,261.
- 4.12.6 This scenario test looks to test the potential impact of incorporating the **latest** GMSF data into the Playing Pitch Strategy projections, to identify the potential impact of using updated population figures (not available at the time of the original analysis), when estimating the total future need for pitch provision.
- 4.12.7 In line with Sport England requirements, the latest Sport England Playing Pitch Calculator has been utilised to identify the facilities that will be required to future need. The table overleaf identifies the total number of new pitches required to meet the additional demand.
- 4.12.8 It is recommended that as part of the Stage E delivery of the PPS, it is identified how much of this provision can be accounted for through improvements to existing provision and how much will be needed to be provided as new pitch provision.
- 4.12.9 **Please note that the Sport England Playing Pitch Calculator does not incorporate lacrosse calculations as there is not a nationally agreed methodology for calculating**

⁴ Identified by the steering group as the appropriate figure for dwellings per person, to use as part of future modelling and projections.

supply and demand of pitch provision, therefore they have not been included in the below table.

Table 4.3: No of pitches required to meet training and match demand of new population

Natural grass pitches	
Adult Football	8.15
Youth Football	16.49
Mini Soccer	14.79
Rugby Union	2.92
Cricket	3.83
Artificial Grass Pitches	
Sand Based	0.14
3G	2.08

- 4.12.10 It is key to note that this table identifies a future need of 2.08 full sized 3G AGP facilities to meet future need driven by population growth. This represents a different figure of 4 new 3G AGP's which was identified within the needs assessment.
- 4.12.11 Given that this scenario is utilising the latest GMSF population data and an approved Sport England modelling tool, it is proposed that **this figure supersedes the figures identified in the needs assessment.**
- 4.12.12 As a result, the recommendation and action plan will identify a total future need of 8 full sized 3G AGP's, which accounts for the current deficit of 6 full sized 3G AGP's and the 2 additional pitches that are identified above.

4.13 Scenario test key findings and emerging recommendations

- 4.13.1 The process of identifying and analysing a number of scenarios has enabled the project steering group to test the potential impact of investing in pitch provision across the study area. The following emerging findings have been identified, which will be reflected in the recommendations and action plan in the following section:
- There is a need to invest in 8 full sized 3G artificial grass pitches, to meet the future need for football, rugby and lacrosse demand over the lifetime of the Local Plan. As identified in Scenario 3, there is an opportunity to further increase the use of artificial grass pitch provision if players are willing to move more competitive football onto artificial surfaces. As this behaviour change continues to occur, the future requirement for artificial provision will need to be reviewed
 - There is also a significant opportunity to invest in artificial cricket provision, reducing the deficit that has been demonstrated for grass wickets across the study area, whilst noting the potential restrictions in using these facilities for match play
 - There is an opportunity to reduce the current deficit across football, cricket and rugby grass-pitch provision by improving the quality of existing provision. This should be seen as the first priority for grass pitch provision as it represents the most affordable way to increase capacity. There is a further opportunity to create rugby capacity by investing in additional floodlighting, in order to increase training capacity
 - While there is an opportunity to increase capacity within the current stock by improving

the availability of education sites, the potential impact is not significant. Given the time and resources required to bring these sites back into community use, it should not be seen as a priority

- Bringing lapsed or disused sites back into use also represents an opportunity to increase the capacity of the existing pitch stock. Woodbank Park and Woodford recreation ground have been identified as high-priority sites and have been included within the action plan

Section 5: Strategic recommendations and action plan



5 Strategic recommendations and action plan

- 5.1.1 To facilitate the development of sport and physical activity across Stockport, it is advised that the Steering Group, set up as part of the Playing Pitch Strategy project, continues to work together to deliver the recommendations defined as part of this strategy.
- 5.1.2 This section of the report provides a set of strategic recommendations, to guide future governance and investment into pitch sport provision across the study area.

5.2 Strategic recommendations

- 5.2.1 This section brings together the complete evidence base and analysis that has been developed as part of the PPS and provides a clear strategy for the future delivery of sports provision in Stockport.
- 5.2.2 At a strategic level, the following key recommendations have been identified for each of the sport typologies, as well as for general sports provision.

General recommendations

- **Recommendation 1:** Work with well-run sports clubs to utilise the existing volunteer network across Stockport and providing more autonomy for clubs, allowing those organisations that have adequate governance and financial stability to develop facilities and participation
- **Recommendation 2:** Address the issue of poor ancillary and changing pavilion quality through the refurbishment and replacement of existing ancillary facilities, prioritising those on multi-pitch sites that are currently well used. Utilise the action plan to identify specific sites for development.
- **Recommendation 3:** Enhance the drainage and maintenance of pitches that are currently operating over-capacity, to increase the pitch capacity to accommodate demand of current user clubs. Utilise the action plan to identify specific sites for development.
- **Recommendation 4:** Work with clubs based at council owned sites, to establish long-term security of use agreements, ensuring that clubs and participants have security of tenure and are able to grow and develop through grant funding and wider investment
- **Recommendation 5:** Work with educational establishments that provide playing pitches for use by community teams, through artificial provision, to secure formal community use of pitches and ancillary facilities through a Community Use Agreement. Where these community use agreements currently exist, work with education establishments and users to ensure that requirements for community use are being enforced
- **Recommendation 6:** For sites that have been identified as lapsed or disused (see following section), utilise the findings from this document to identify whether the site should be retained as open space (such as general amenity grassland', disposed of as playing fields or whether a site is required to be brought back into community use to meet current and future demand. Where disposal is to be considered, the site must meet one of the five exceptions identified by Sport England in the 2018 Playing Fields

Policy and Guidance⁵ and be aligned with wider council priorities

- **Recommendation 7:** For any site that is being re-developed as a sports facility across the study area, ensure that regular and affordable community use provision is included as an obligation, attached to the relevant condition. Work with local community groups and the relevant national governing bodies of sport to ensure that the community use agreements reflect the requirements of clubs and wider society,

Football

- **Recommendation 8:** As part of the Local Plan and ongoing planning policy, protect all sites that currently have football pitches and are therefore defined as playing fields
- **Recommendation 9:** Continue to invest in the grass pitches across the study area, to improve the quality and reduce the amount of cancelled games during periods of poor weather. Enhance the drainage and maintenance of pitches that are currently being used over-capacity by clubs
- **Recommendation 10:** Reconfigure and reallocate pitch sizes (for example, from adult-sized to youth-sized) in order to meet demand with the appropriate size of pitch provision. See action plan for identification of specific sites
- **Recommendation 11:** As identified in the supply and demand analysis, there is need for 8 further AGPs within Stockport that are available to the community, taking into consideration the current deficit of 6 full sized 3G AGP's and 2 additional pitches to meet future population growth. Identify potential sites for multi-pitch hub sites, as well as engaging with schools to increase community use at existing provision that is unavailable to the community.

Cricket

- **Recommendation 12:** As part of the Local Plan and ongoing planning policy, protect all sites that currently have cricket pitches and are therefore defined as playing fields. Seek to enhance cricket sites in order to increase the capacity of provision across the study area, in line with the site-specific action plan.
- **Recommendation 13:** Work with the ECB to support the development of female cricket, with the target to continue to grow the women and girls game across the study area, ensuring that there is an offer for any female at any age within 15 minutes of where they live in the Stockport area
- **Recommendation 14:** Work with the ECB to support the investment into development of cricket within South Asian Communities, specifically focussing on urban areas within the Greater Manchester Area and sites that are currently used extensively by South Asian participants. Work with the ECB to identify the patterns of imported demand from outside of the local authority, such as from the city of Manchester, to ensure that future provision meets the needs of the wider city region
- **Recommendation 15:** Work with the ECB to address the significant deficit of

⁵ Sport England Playing Fields Policy Guidance (2018: Sport England) - <https://www.sportengland.org/media/12940/final-playing-fields-policy-and-guidance-document.pdf>

matchplay provision across the study area. Where possible and where a robust management arrangement can be established, this could be achieved by bringing lapsed or disused cricket facilities back into use. In line with wider ECB strategic objectives, this could also be achieved through the development of further non-turf pitches, for both recreational cricket and entry-level competitive match play.

- **Recommendation 16:** Where league rules allow and sites have the minimum pitch specification, invest in non-turf wickets in order to alleviate overplay issues across the study area, seeking to increase capacity for junior cricket (up to u15's) and recreational or lower level league cricket.
- **Recommendation 17:** Work with local cricket stakeholders to seek to improve the quality of all pitches that are secured for community use and currently rated as 'standard', aiming for an overall rating of 'good'. This will increase the carrying capacity in the local area, therefore helping to address some of the deficit of provision, as well as improving the experience of all those participating in the game.

Rugby

- **Recommendation 18:** As part of the Local Plan and ongoing planning policy, protect all sites that currently have rugby pitches and are therefore defined as playing fields
- **Recommendation 19:** Where specific issues have been identified, support clubs with improving the quality of ancillary provision, especially where current provision is limiting usage and club growth.
- **Recommendation 20:** Improve the presence of artificial pitch drainage at club sites across the study area, along with the maintenance regime required to ensure the pitches remain of a high quality
- **Recommendation 21:** Improve the management of floodlit training areas at club sites across Stockport. Focus on the presence of suitable drainage and maintenance regimes to meet the level of focussed demand on these areas

Hockey

- **Recommendation 22:** As part of the Local Plan and ongoing planning policy, protect all sites that currently have hockey pitches and are therefore defined as playing fields
- **Recommendation 23:** Work with key hockey sites, such as Life Leisure Bramhall to resolve issues of anti-social behaviour and poor maintenance regimes being present
- **Recommendation 24:** Work with educational facilities to manage issues regarding accessibility for clubs in the area, along with maintaining suitable sand based provision rather than resurfacing to 3G rubber crumb at these sites. Prioritise work with educational sites that are currently used for hockey, working with clubs to ensure they have long term security of tenure on site.

Lacrosse

- **Recommendation 25:** As part of the Local Plan and ongoing planning policy, protect all sites that currently have lacrosse pitches and are therefore defined as playing fields
- **Recommendation 26:** Work with Kingsway Sports Club and the Heatons Sports Club

to develop a suitable artificial pitch on site, to increase the quality of provision and carrying capacity of both sites for football and lacrosse demand.

5.3 Borough wide and sub-area specific key issues

5.3.1 The following table provides a specific analysis of the key issues that need to be addressed in each of the sub-areas across the study area. The action plan, which has been presented by sub-area, can then be used to identify the specific actions that are required to address these issues. It should be noted that for football, rugby lacrosse, figures are presented in Match Equivalent Sessions (MES)⁶ unless stated otherwise. Cricket figures are presented in matches per season and hockey figures are presented in hours.

Table 5.1: Key sub-area issues and opportunities

Sub area	Summary of issues and opportunities
Cheadle	<p>Football Over the lifetime of the Local Plan, there is projected to be a small amount of spare capacity for adult football (7.5MES), however this is offset by significant deficits in youth 11v11 (19.5MES) youth 9v9 (8MES), mini 7v7 (4.5MES) and mini 5v5 (11MES) provision. The sub-area is home to large football clubs, including Cheadle and Gatley Jnr Football Club and Cheadle FC among others. The sub-area has 9 AGP's, three of which are full sized 3G. The recent development of a full sized facility at the Seashell Trust has provided much needed additional capacity, addressing previous issues of pitch availability faced by football clubs. The future analysis for 3G provision identifies a future requirement for an additional one full sized 3G AGP, to meet the growing need, especially for junior football.</p> <p>Cricket The sub-area is home to Cheadle CC and Cheadle Hulme CC, both of which are large clubs with both adult and junior sections. There is not expected to be significant growth at either of these clubs however both sites currently have a deficit of provision, caused mainly by a lack of adequate junior provision. The combined deficit of provision in the area over the Local Plan period is 17 matches per season across both adult and junior cricket. Cricket provision in the sub-area is of a good quality, however consultation indicated that new NTP provision and ancillary improvements are priorities for the home clubs.</p> <p>Rugby There is no rugby provision currently located in the sub-area</p> <p>Hockey Cheadle Hulme school is based in the sub area and used by Wilmslow HC. This is imported demand from outside of the study area.</p> <p>Lacrosse The sub-area is home to Cheadle Lacrosse Club and Cheadle Hulme Lacrosse Club, both of which have large senior and junior sections. Consultation with Cheadle Lacrosse Club has identified an aspiration to develop a 3G AGP pitch on site that can be used for training and match play, as well as improved ancillary provision. Further capacity across the study area would allow the clubs to grow and meet the increasing needs of club members.</p>
Heatons and Reddish	<p>Football</p>

⁶ **Match equivalent sessions** is an appropriate comparable unit for pitch usage. For football, rugby union and lacrosse, pitches should relate to a typical week within the season and one match = one match equivalent session if it occurs every week or 0.5 match equivalent sessions if it occurs every other week (i.e. reflecting home and away fixtures). For cricket pitches, matches per season is used, as all supply and demand analysis is undertaken over the period of a season.

Sub area	Summary of issues and opportunities
Marple	<p>Over the lifetime of the Local Plan, there is projected to be a small amount of spare capacity for adult football (10MES), however this is offset by significant deficits in youth 11v11 (14MES), mini 7v7 (5MES) and mini 5v5 (3) provision. The sub-area is home to large football clubs, including Reddish North End JFC, which plays across multiple sites in the sub-area. The sub-area has 8 AGP's, one of which is full sized 3G (Burnage RFC). Burnage RFC is predominantly a rugby site, therefore supply is shared between the home rugby club and local football clubs. The future analysis for 3G provision identifies a future requirement for an additional one full sized 3G AGP, to meet the growing need, especially for junior football.</p> <p>Cricket The sub-area is home to the Heaton Sports Club, which caters for informal demand from Heaton Mersey Cricket Club. There is no supply or demand for cricket in the area, therefore the matchplay analysis for pitches is balanced.</p> <p>Rugby The sub-area is home to Burnage Rugby Club and Heaton Moore Rugby Club, as well as school provision at Priestnall High School. There is a current deficit of 6MES across the sub-area, which is influenced by a large deficit (8.5MES) at Heaton Moore Rugby Club. Further investment and development is required to address this deficit, with potential spare capacity provided by the 3G AGP at Burnage RFC.</p> <p>Hockey There are two sand-based AGP's in the sub-area at Priestnall School and Reddish Vale Technology College. Priestnall School is used for training by Heaton Moor Juniors however it is not full sized so cannot accommodate adult matchplay.</p> <p>Lacrosse The sub-area is home to Heaton Mersey Lacrosse Club, which plays at the Heaton's Sports Club. The site has a deficit of provision, due to the high volume of demand during the season.</p>
Marple	<p>Football Over the lifetime of the Local Plan, there is not projected to be any spare capacity of provision across any pitch typologies, with the highest deficit predicted to be for youth 11v11 provision (14MES). The sub-area is home to large football clubs, including Marple Athletic JFC, which plays across multiple sites in the sub-area. The sub-area is also home to Brabyns Park, one of the largest local authority managed sites in the study area. The sub-area has 1 AGP, which is a full sized sand-based facility at Marple High School. The future analysis for 3G provision identifies a future requirement for an additional one full sized 3G AGP, to meet the growing need, especially for junior football.</p> <p>Cricket The sub-area is home to five active clubs with all sites showing a deficit of provision apart from Mellor Sports Club (Mellor CC). There is a total projected future deficit of 31 matches per season, when taking into consideration junior and senior pitch provision.</p> <p>Rugby The sub-area is home to Marple Rugby Football Club, as well as school provision at Marple High School. There is a current deficit of 3.5MES across the sub-area, which is influenced by a deficit (4.5MES) at Marple RFC.</p> <p>Hockey There is one sand-based AGP's in the sub-area at Marple Hall School, however the site is not currently used for affiliated hockey usage and represents potential future capacity for the existing hockey clubs in the study area.</p> <p>Lacrosse The sub-area is home to Mellor Lacrosse Club, which plays at the Mellor Sports Club. The site has a significant deficit of provision (5.5MES), due to the high volume of demand during the season and the poor quality of existing provision.</p>
Bramhall and	<p>Football</p>

Sub area	Summary of issues and opportunities
Cheadle Hulme South	<p>Over the lifetime of the Local Plan, there is projected to be a small amount of spare capacity for adult football (2MES), however this is offset by deficits in youth 11v11 (5.5MES) youth 9v9 (1.5MES), mini 7v7 (0.5MES) and mini 5v5 (7.5MES) provision. The sub-area is home to large football clubs, including Queensgate FC (15 teams), Bramhall North 75 (14 teams) and Mountfield Rovers (10 teams) among others. The sub-area has 2 AGP's, none of which are full sized 3G.</p> <p>Cricket The sub-area is home to four active clubs with all sites being home to clubs with at least 8 teams each. The largest club in the sub-area (by team number), is Stockport Trinity CC. There is a total projected future deficit of 101 matches per season, which reflects the significant amount of junior demand in the sub-area.</p> <p>Rugby The sub-area is home to Manchester Rugby Football Club and Stockport Rugby Union Football Club, as well as additional provision at Buttersfield, Life Leisure Bramhall and Cheadle Hulme School. It is therefore the most active of the sub-areas with regards to rugby. There is a current deficit of 2.75MES across the sub-area, which is influenced by a deficit (3.5MES) at Stockport RFC.</p> <p>Hockey There is one sand-based AGP's in the sub-area at Life Leisure Bramhall. This is the only full sized sand-based AGP site in the local authority that is used for competitive hockey by a Stockport-based club (Cheadle Hulme School is used by Wilmslow HC, which is imported from outside of the local authority. With the pitch used extensively by Stockport Bramhall Hockey Club.</p> <p>Lacrosse The sub-area is home to Cheadle Hulme Lacrosse Club, which plays at the Cheadle Hulme Ladybridge Sports and Social Club. The site has three pitches and the supply and demand for lacrosse is balanced, however the quality of provision is poor.</p>
Stockport Central	<p>Football Over the lifetime of the Local Plan, there is projected to be a small amount of spare capacity for adult football (6MES), however this is offset by deficits in youth 11v11 (3.5MES) youth 9v9 and mini 5v5 (0.5MES) provision. The sub-area is home to large football clubs, including Offerton Park (9 teams) and Stalybridge Celtic (6 teams) as well as a number of smaller adult and junior clubs. The sub-area has 3 AGP's, 1 of which is full sized 3G.</p> <p>Cricket The sub-area is home to two active clubs (Offerton CC and Stockport CC), both of which are projected to develop a deficit of provision over the lifetime of the Local Plan. Stockport CC is at the greatest risk of not being able to provide for it's members, with a projected deficit of 62 matches per season. There is a total projected deficit of 53 matches per season across the study area.</p> <p>Rugby There is no rugby provision currently located in the sub-area.</p> <p>Hockey There is no rugby provision currently located in the sub-area.</p> <p>Lacrosse The sub-area is home to Stockport Lacrosse Club, which is one of the largest clubs in the study area. The club has suffered from vandalism and also has faced issues with waterlogging during periods of poor weather. The site that the club uses (Stockport Cricket and Lacrosse Club) has a deficit of 0.5MES for lacrosse.</p>
Werneth	<p>Football Over the lifetime of the Local Plan, there is not projected to be any spare capacity of provision across any pitch typologies, with the highest deficit predicted to be for youth 11v11 provision (9.5MES). The sub-area is home to large football clubs, including Reddish Vulcans Jnr and Sigol Athletic JFC. It is also home to Woodley Sports Village, which has a range of artificial grass pitch provision. In total, the sub-area has 11 AGP's, 2 of which are full sized 3G AGP's.</p>

Sub area	Summary of issues and opportunities
Stepping Hill	<p>Cricket The sub-area is home to three cricket sites, namely Bredbury St Marks CC, Romiley CC and Woodley CC, all of which have 8 or more teams. Given the significant amount of demand and relatively small amount of supply, there is projected to be a total deficit of 129 matches per season by the end of the Local Plan period. Woodley CC is projected to have the highest deficit of 59 matches per season.</p> <p>Rugby There is no rugby provision currently located in the sub-area.</p> <p>Hockey There is one sand-based AGP's in the sub-area at Werneth School. The site has been identified as being available for community use and has been identified as being an opportunity for greater hockey usage over the period of the Local Plan</p> <p>Lacrosse There is no lacrosse provision currently located in the sub-area.</p> <p>Football Over the lifetime of the Local Plan, there is projected to be a small amount of deficit for grass football provision, with deficits in youth 11v11 (2.5MES), mini 7v7 (2.5MES) and mini 5v5 (1MES), alongside spare capacity in adult 11v11 (2MES) and youth 9v9 (0.5MES). The sub-area is home to large football clubs, including Great Moor County JFC (17 teams), Richmond Rovers (15 teams) and FC Torkington (10 teams) among others. The sub-area has 3 AGP's, one of which is a full sized 3G (Hazel Grove Sports Centre).</p> <p>Cricket The sub-area has three active clubs (Hawk Green CC, Norbury CC and Stockport Georgians CC). The largest club in the sub-area (by team number), is Stockport Georgians CC. There is a total projected future deficit of 82 matches per season, which reflects the significant amount of junior demand in the sub-area.</p> <p>Rugby The sub-area has only one site with rugby provision (Stockport Grammar School), however the site is not available for community use.</p> <p>Hockey The sub-area has only one site with hockey provision (Stockport Grammar School), however the site is not available for community use.</p> <p>Lacrosse The sub-area is home to Norbury Cricket and Lacrosse Club, which is the home site for Norbury Lacrosse Club. The supply and demand analysis for the sub-area indicates a deficit of 2MES.</p>

5.4 Disused/Lapsed sites

- 5.4.1 As part of delivering the action plan, it is crucial that the steering group has a clear process for planning the future use of disused or lapsed sites. A disused site is defined as a site that has been used for formal sport at some point in the past 5 years, whereas a lapsed site has not been used for formal sport for more than 5 years.
- 5.4.2 Sport England's Playing Fields Policy, which the organisation updated in 2018 to reflect the changes in the National Planning Policy Framework, states that unless the development meets one of the five specific exceptions, Sport England will oppose the granting of planning

permission for any development which would lead to the loss of, or would prejudice the use of;

- All or any part of a playing field, or
- Land which has been used a playing field and remains undeveloped, or
- Land allocated for use as a playing field.

5.4.3 Sport England is a statutory consultee on any site that has been used within the last 5 years, whereas it is a non-statutory consultee on any site that has not been used for more than 5 years.

5.4.4 Disused sites are defined as not being used at all by any users and are not available for community hire either. Once these sites are disused for five or more years they will then be categorised as 'lapsed sites'.

5.4.5 Lapsed sites are sites that last known use was as a playing field more than five years ago. These fall outside of Sport England's statutory remit but still have to be assessed using the criteria in paragraph 97 of the National Planning Policy Framework and Sport England would nonetheless challenge a proposed loss of playing pitches/playing field which fails to meet such criteria. It should be emphasised that the lawful planning use of a lapsed site is still that of a playing field.

5.4.6 Many of the sites listed below are active or former education sites, whilst the council will work positively with the education sites to bring the playing fields back into use where it would secure wider community benefits there is only limited intervention the council can do due to the sites being run independently. Educational land is covered by its own legislation, therefore if disposal of a site for development is considered to be an option, consent would be required under Section 77 of the Schools Standards and Framework Act 1998 and Schedule 1 to the Academies Act 2010, in addition to assessment under Sport England and Planning policy.

5.4.7 The disused and lapsed sites identified as part of the Stockport PPS are detailed below. These are also referenced in table 3.17 of the needs assessment.

5.4.8 The disused and lapsed sites identified as part of the Stockport PPS are detailed in table 5.2 below. A short summary has been included to explain how, if the site cannot be deemed to be surplus, the loss can be effectively mitigated.

Table 5.2: Disused/Lapsed sites in Stockport

Site	Current status	Site detail	Existing/ Previous provision	Suggested mitigation/next steps
Former St. Marks C of E Primary School site, Hayfield Road Werneth	Lapsed	No demand is currently present on site and the school no longer maintain the football pitches to a standard that would be suitable for community use. The pitch is disassociated with the school, issues with safeguarding could prevent the pitch being used by the school.	Football- 1x Youth 9v9	The site does not have significant space nor capacity for re-provision and is therefore not a priority site for bringing back into use. The site affords protection as designated Local Open Space and will remain so, it is used for general sporting and recreation activities.
Marple Sixth Form College, Buxton Lane, Marple	Disused	Currently no fields on the school site due to building of new leisure centre. Current pitch is not used for any sport provision due to the condition of the pitch and lack of demand. Issues with drainage.	Rugby (Unknown) Football Adult 11v11	The pitch is not required for education usage, the sports hall has a community use agreement for its use, which was a requirement of Condition 9 of Planning Decision 'DC065518'. The site affords protection as Educational land and it is a playing pitch by its lawful use.
Abney Hall Park, Cheadle	Disused	Poor drainage present on site, the area is now a species rich grass meadow.	Football- 2x Adult 11v11	Given the site functions as a country park, containing a SBI and is located in the green belt, it is not a priority for the Council to bring the pitches back into use.
Bowerfold Open Space, Bowerfold	Disused	Lack of demand present on site. Issues with gradient of site.	Football- 1x Adult 11v11	It is unrealistic for this to be brought back into use as playing pitches due to the topography and drainage issues, the council's priorities are for general recreation on this site. It will continue to be protected as Open Space

Site	Current status	Site detail	Existing/ Previous provision	Suggested mitigation/next steps
Lane, Heaton Norris				
Bruntwood Park, off A34	Disused	Poor drainage present on site, therefore provision is not suitable to meet demand. Sensitive site due to grade B SBIs etc. species rich grassland.	Football- 2x Youth 11v11	Given the sensitivities of this site, it is not a priority for the Council to bring the pitches back into use. It will continue to be protected as Open Space and as an ecological corridor.
Woodbank Park	Disused	Changing facilities closed due to Health and Safety issues which meant teams could no longer play on site, the area is currently species rich grass meadow however it has been identified as a potential site for grass pitch small sided central venue football.	Football- 7x Adult 11v11 Adult grass cricket square	This is a high-priority site, due to the high current deficit of football and cricket provision across the study area. Ambitions to have as a hub site/central venue for sport. Further feasibility work is required in order to explore works required for this site can be brought back into use. A combination of youth and mini football pitches should be explored, ideally in partnership with one or more home clubs. Through consultation with the ECB, this site may provide an opportunity for investment, through the non-turf-pitch investment programme, which focusses on providing facilities for casual cricketers and entry-level competition.
Brabyns Park, Brabyn Brow, Marple	Lapsed	Poor drainage and mole infestation present.	Football- 3x Adult 11v11 and Junior 11v11 football	A high level of funding would be required to bring this back into use as playing fields. There is limited demand for football on this site, the sports demand in the area is catered for by good quality private provision such as Marple Hall School and Mellor sports club. It will continue to be protected as Green Belt and as an ecological corridor.
Former Rosehill Primary School, Marple (amalgamat ed with	Lapsed	Site has become landlocked and the Council cannot access the site for maintenance	The site is a former school playing field site. Satellite imagery (earliest date December 2000) does not show marked pitches.	The site does not have significant space nor capacity for re-provision and is therefore not a priority site for bringing back into use. There is a deficit of football provision across the study area, therefore if the site's use as a pitch is not to be resurrected/ lost to development the site should be mitigated through the re-provision of high quality grass pitches or artificial grass pitch provision to meet local and national policy and to be in line with Exception 4 from Sport England Playing Field guidance.

Site	Current status	Site detail	Existing/ Previous provision	Suggested mitigation/next steps
Dale primary and Piecefield)				
Former Peacefield Primary School, off Cross Lane Marple (amalgamated with Rosehill and Dale Primary	Lapsed	A former education site which is now closed. The site is adjacent to the current Marple Sixth Form site.	Satellite imagery from 2009 does not indicate there to be any pitch markings, however the size of the land would fit a youth 9v9 or 2 mini 5v5 football pitches	The site does not have significant space nor capacity for re-provision and is therefore not a priority site for bringing back into use. There is a deficit of football provision across the study area, therefore if the site's use as a pitch is not to be resurrected, the site should be mitigated through the re-provision of high quality grass pitches or artificial grass pitch provision to meet local and national policy and to be in line with Exception 4 from Sport England Playing Field guidance.
Former Barrack Hill School, Quarry Road, Romiley	Lapsed	A former education site which is now closed.	Satellite imagery from 2018 shows 2 9v9 grass football pitches, neither are marked out but both have goals.	The site does not have significant space nor capacity for re-provision and is therefore not a priority site for bringing back into use. There is a deficit of football provision across the study area, therefore if the site's use as a pitch is not to be resurrected, the site should be mitigated through the re-provision of high quality grass pitches or artificial grass pitch provision to meet local and national policy and to be in line with Exception 4 from Sport England Playing Field guidance.
St Stephen's CE Primary School, Offerton	Lapsed	Landlocked former playing field with limited access. There is a desire for the site to be converted into allotments	Satellite imagery from 2000 does not show any football pitches marked out. However the ground next to the school could accommodate two 5v5 pitches.	The site does not have significant space nor capacity for re-provision and is therefore not a priority site for bringing back into use, will be protected as open space .
Former Thornfield School,	Lapsed	A former education site which is now closed. There is no maintenance on this site.	The land has fallen into disuse since the school closed in 1999. Satellite imagery from 2000 shows that the land is well	The site does not have significant space nor capacity for re-provision and is therefore not a priority site for bringing back into use. There is a deficit of football provision across the study area, therefore if the site's use as a pitch is not to be resurrected and developed, the site should be mitigated through the re-provision

Site	Current status	Site detail	Existing/ Previous provision	Suggested mitigation/next steps
Heaton Mersey			maintained however no football pitches are marked out. The land at the site could fit one 5v5 football pitch.	of high quality grass pitches or artificial grass pitch provision to meet local and national policy and to be in line with Exception 4 from Sport England Playing Field guidance.
Windlehurst School, Hawk Green	Lapsed	This is an active education site, however playing fields are leased for grazing.	2017 satellite imagery shows a small 5v5 football pitch marked out on a synthetic surface. Satellite imagery from 2000 does not show any pitches marked out, however the land could fit one 7v7 grass pitch.	The site does not have significant space nor capacity for re-provision and is therefore not a priority site for bringing back into use. There is a deficit of football provision across the study area, therefore if the site's use as a pitch is not to be resurrected, the site should be mitigated through the re-provision of high quality grass pitches or artificial grass pitch provision to meet local and national policy and to be in line with Exception 4 from Sport England Playing Field guidance.
Moreton Lane Playing Field	Disused	A previous local authority playing field site, access is now poor and there is no available parking	Satellite imagery from 2000 does not show any pitches marked out, the playing field could fit one youth 9v9 football pitch or an undersized youth 11v11 football pitch.	If the site's use as a pitch is not to be resurrected, the loss of the site should be mitigated through the re-provision of high quality grass pitches or artificial grass pitch provision (Exception 4).
Woodford Recreation Ground	Active site, used for football	A local authority managed site, that has previously been used for both cricket and football but is now only used for football. The site has 3 x adult 11v11 pitches and 1 x youth 9v9 pitch.	The site previously had grass cricket provision (approximately 2012) but this is now not used.	This is a high-priority site, due to the high current deficit of cricket provision across the study area. Further feasibility work is required in order to explore whether this site can be brought back into use. If this is feasible, a combination of youth and mini football pitches should be explored, ideally in partnership with one or more home clubs. Through consultation with the ECB, this site may provide an opportunity for investment, through the non-turf-pitch investment programme, which focusses on providing facilities for casual cricketers and entry-level competition.
Former Hulme Hall Grammar School site, Hulme Hall Road	Disused	Former site of Independent school that is now closed	The site is currently disused but 2018 satellite imagery shows that there are 3 mini 5v5 football pitches marked out on a synthetic surface	The site does not have significant space nor capacity for re-provision and is therefore not a priority site for bringing back into use. There is a deficit of football provision across the study area, therefore if the site's use as a pitch is not to be resurrected/ developed, it should be mitigated through the re-provision of high quality grass pitches or artificial grass pitch provision to meet local and national

Site	Current status	Site detail	Existing/ Previous provision	Suggested mitigation/next steps
Cheadle Hulme				policy and to be in line with Exception 4 from Sport England Playing Field guidance. (Exception 4).
Vernon Park Primary school Turncroft lane playing fields	Lapsed	A former education site which is now closed. There is no maintenance on this site.	Satellite imagery from 2000 shows two goal posts but no pitch markings. The distance between the goals fits the measurements for a small 9v9 football pitch.	The site does not have significant space nor capacity for re-provision and is therefore not a priority site for bringing back into use. There is a deficit of football provision across the study area, therefore if the site's use as a pitch is not to be resurrected/ developed the site should be mitigated through the re-provision of high-quality grass pitches or artificial grass pitch provision, meet local and national policy and to be in line with Exception 4 from Sport England Playing Field guidance (mitigation could be provided at Woodbank).
Peel Moat recreation ground	Lapsed	A previous local authority playing field site, access is now poor.	Satellite imagery indicates that there are permanent goals affixed at the site, but no pitch marked out. The pitch size is for youth 5v5 pitches.	It is unrealistic for this to be brought back into use as playing pitches due to the size of the site and being landlocked. If the site's use as a pitch is not to be resurrected/developed, the loss of the site should be mitigated through the re-provision of high-quality grass pitches or artificial grass pitch provision to meet local and national policy and to be in line with Exception 4 from Sport England Playing Field guidance.
Reddish Vale High School	AGP Disused	A full sized sand-based AGP, located on an active education site.	Previously used for hockey and recreational football.	Explore the opportunity for this site to have the AGP resurrected and be prioritised for football, to be used by one of the local clubs.

5.5 Action plan

- 5.5.1 Through a detailed supply and demand analysis of the sports included in the scope of the strategy, as well as stakeholder consultations across the study area, an action plan has been created, which will guide the steering group in their delivery of sports provision and facility decisions over the next 10 years. The action plan is broken down by site with clear owners, timescales and expected resources. This is shown in Table 4.1.
- 5.5.2 The table identifies potential sources of external funding. It should be noted that funding for the actions below could come from one, or a combination, of funding sources shown below. This is not an exhaustive list and could be extended to other sources, depending on availability.
- CIL monies
 - Section 106 funding
 - Community Grant Schemes
- 5.5.3 The Action Plan does not identify all those clubs that may be partners or provide resources in relation to its delivery. It is assumed that where clubs have a long-standing interest in a specific site that they will be a partner in delivering the actions and contribute financially or in-kind where appropriate.
- 5.5.4 The Action Plan does not identify Stockport Council as a key resource either in terms of officer time or finance, except for those sites owned and/or managed by the Council. However, the Council has an interest in all those projects delivered within the local authority area and may contribute towards them either financially or in-kind, as appropriate and subject to available resources. It should be noted that not all sites have actions allocated to them, as it is unrealistic to expect funding partners to contribute to improvements at all facilities across a local authority.

Action plan terminology

- Issue/ opportunity: The issue or opportunity that can be addressed
 - Key Actions: Numbering indicates order of preference
 - Partners: Top listed partner is identified as lead partner
 - Resources: Key resource implications (time and money)
 - Timescale: Short: 0–2 yrs. Medium: 2-5 yrs. Long 5-10 yrs.
 - Priority: Low, Medium and High, depending on overall impact for sports participation
 - Acronyms: SMBC (Stockport Metropolitan Borough Council), FA (Football Association), FF (Football Foundation), ECB (England & Wales Cricket Board), CCB (Cheshire Cricket Board), EH (England Hockey), RFU (Rugby Football Union), English Lacrosse (EL), Institute of Groundsmanship (IOG)
- 5.5.5 All costs are estimated, based on 4global desktop research and consultation with industry experts. These are not based on firm pricing or quotes from reputable contractors, unless stated otherwise.

- 5.5.6 All maintenance costs represent the full cost for maintaining the pitches. They do not, therefore, reflect any maintenance that is currently being undertaken at the site and the cost incurred for these services. In reality, the cost for additional maintenance would be reflected by an increase of the current maintenance cost, rather than the full price stated as part of this action plan.
- 5.5.7 There is not unlimited funding to invest in sports facilities, for any of the identified partners. As a result, actions have been prioritised on sites that are currently not fit-for-purpose, showing a deficit of provision, or those that represent a viable investment opportunity that will significantly increase the quality, quantity or accessibility of sports provision in Stockport.
- 5.5.8 To provide the Council and Steering Group with a clear identification of 'strategic' investment priorities across the study area, high profile strategic investment projects have been identified overleaf in bold. These projects are likely to be limited in number due to their size but will deliver a significant level of benefit for grass-roots sport and physical activity. These projects are likely to cost approximately £250,000 or more each and will include a number of different stakeholders and funding partners.

Table 5.3: Stockport's PPS Action Plan (2018-2035) -

Site	Sub Area	Action ID/Ref	Issue / opportunity	Key Action(s)	Partners	Resources/ Costs	Timescale	Priority
Cheadle								
Cheadle And Gatley Junior Football Club – Cross Road Playing Fields	Cheadle	Football Protect	The club is growing fast and requires long-term security of tenure if it is to access FA and Football Foundation grants.	Support in establishing a 25year (minimum) lease on site, or alternative security of tenure.	SMBC	SMBC officer time	Short	High
		Football-Enhance	Due to the large amount of demand on site, it is recommended that the club are supported in establishing suitable solutions to address issues of waterlogging stemming from broken pipe works to the North West of the site.	Establishment of robust maintenance regime on site.	FF	Work required to be established through IOG assessment.	Medium	Medium
		Football-Enhance	Due to the change of demographics in the club, along with FA targets of doubling female participation, it is recommended that the club are supported in establishing suitable ancillary renovations on site. This should include increased changing rooms and suitable gender divides.	Investment into renovation and expansion of ancillary provision	FF SMBC	Cost subject to further feasibility work.	Medium	Low
Hazel Grove Cricket Club	Cheadle	Cricket- Provide	The site is currently at capacity for provision, along with no capacity being present at the peak times.	Installation of a 2 lane net facility to support senior and junior demand	Hazel Grove Cricket Club ECB	£21,000 Built net facility	Medium	Medium
Outwood Road Recreation Ground	Cheadle	Football-Provide	Due to the large amount of demand present on site, and a lack of ancillary provision currently, it is	Investment into procurement of new ancillary provision	SMBC	Cost subject to further feasibility work.	Medium	High

Site	Sub Area	Action ID/Ref	Issue / opportunity	Key Action(s)	Partners	Resources/ Costs	Timescale	Priority
			recommended that the site is supported in establishing suitable provision to cater for all ages on site.					
Park Road Playing Fields	Cheadle	Football-Enhance	There is significant over play on the youth 11v11 and youth 9v9 pitch typologies within the Cheadle sub area.	Reinstate previous youth 11v11 pitches on site and improve the maintenance regime on site to increase carrying capacity	FF SMBC	Work required to be established through IOG assessment.	Short	High
Park Road Stadium	Cheadle	Football-Provide	It is recommended that the club are supported in purchasing the playing fields adjacent to it, Park Road playing fields, in order to improve maintenance and establish further youth and junior pitches on it.	Purchasing of adjacent land and creation of youth 11v11, youth 9v9 and mini soccer pitches	SMBC Stockport Football Academy	To be defined by further feasibility work	High	Medium
Sandringham Road Playing Fields	Cheadle	Football-Enhance	The site suffers from significant waterlogging and drainage issues, leading to match cancellations during periods of poor weather.	Work with the IOG and FF to undertake detailed feasibility work for improved maintenance and artificial drainage	SMBC FF IOG	Work required to be established through IOG assessment.	Short	High
South Manchester Sports Club	Cheadle	Football-Enhance	Due to the site being heavily under capacity for 7v7 provision, and over capacity for 9v9 provision, it is recommended that the club are supported in reconfiguring one of the pitches to 9v9 in order to better meet demand on site.	Reconfiguration of pitches on site.	FF	Procurement of suitable goal posts.	Short	Medium
The Kingsway School	Cheadle	Lacrosse-Provide	This site is well used as a multi-sport site, including lacrosse. The	Undertake further feasibility study work to explore the option	SMBC English Lacrosse	Installation of a new artificial pitch: £800K	Medium	High

Site	Sub Area	Action ID/Ref	Issue / opportunity	Key Action(s)	Partners	Resources/ Costs	Timescale	Priority
			site suffers from waterlogging and drainage issues and also lacks a high quality area to be used for lacrosse training.	of installing a multi-sport 3G AGP, to be used for lacrosse training and matchplay, as well as additional sports on site.				
William Scholes Playing Fields	Cheadle	Football-Enhance	The site under capacity for adult 11v11 pitch provision and over capacity for youth 11v11 provision.	Reconfigure 1 x adult 11v11 as a youth 11v11 pitch	SMBC FF	Procurement of suitable goal posts.	Short	Medium
Heatons and Reddish								
Frederick Whittaker Scott Playing Fields	Heatons and Reddish	Football-Enhance	The ancillary on site is suffering from a leaking roof, which is in need of repair. The ancillary facility is able to be hired out by community clubs when they use the grass pitches and is not currently fit for purpose.	Invest in the roofing of the ancillary and refurbish the existing ancillary to provide a high quality changing facility.	FF SMBC	To be defined by further feasibility work	Medium	Low
Harrogate Road	Heatons and Reddish	Football-Enhance	There are significant problems with drainage on site, to the point where access to the site is reduced and therefore maintenance works cannot be carried out.	Establishment of robust maintenance regime on site.	FF	Work required to be established through IOG assessment.	Short	High
Priestnall School	Heatons and Reddish	Rugby-Provide	The site is used for occasional demand from Heaton Moore RFC, for their junior teams. It is recommended that the school are supported in establishing a more suitable maintenance regime on site, to increase provision and consequent carrying capacity.	Investment into a more robust maintenance regime	Priestnall School SMBC	RFU facility support	Short	Medium

Site	Sub Area	Action ID/Ref	Issue / opportunity	Key Action(s)	Partners	Resources/ Costs	Timescale	Priority
The Mike Doyle Centre	Heatons and Reddish	Football-Enhance	There is a significant amount of youth 11v11 demand on site, despite there not being a suitable pitch present.	It is recommended that the club are supported in expanding the current 9v9 pitch, and overmarking a 9v9 within a new 11v11 pitch. This would require the site to be invested in, to improve drainage to the north of the current pitch and also to carry out suitable top soiling and sanding in order to acquire a suitable carrying capacity on site.	FF SMBC	Work required to be established through IOG assessment.	Medium	Medium
Reddish Vale School	Heatons and Reddish	Football-Enhance	This is a disused site that previously had football provision on site.	Explore the feasibility of bringing this site back into use, focusing on youth 11v11 and mini football provision, through partnership with a network of local clubs.	FF , Reddish Vale High and SMBC	Work required to be established through IOG assessment.	Medium	Medium
Marple								
Compstall Cricket Club	Marple	Cricket-Provide	The site has significant drainage issues on site, as well as having a deficit of provision for competitive cricket.	Support the club in sourcing funding for cover provision. Conduct further feasibility work to confirm whether the site is suitable for NTP investment, to address capacity issues	Compstall Cricket Club ECB	£225 p/cover	Short	Low
Manchester Rugby Club Cheadle Hulme	Marple	Cricket- Provide	This growing club has poor net and training facilities, which are not fit for purpose	Investment into built net renovations	Sports Ground operators ECB	Cost	Medium	High

Site	Sub Area	Action ID/Ref	Issue / opportunity	Key Action(s)	Partners	Resources/ Costs	Timescale	Priority
Cricket Club and Grove Park Squash Club								
Marple Hall School	Marple	Hockey- Enhance	Due to significant waterlogging issues, the facility is not currently available for community use. Should this be addressed then the school will increase its capacity for community bookings.	Support the school to resolve drainage issues on the AGP and re-surface the sand-based carpet to a suitable standard for competitive hockey and football training.	Marple Hall School EH	Cost dependent on scope of works	Medium	Medium
		Football-Enhance	As above, there are significant issues with drainage on the AGP on site.		FF			
Marple Rugby Football Club	Marple	Rugby- Enhance	The club currently has significant issues with waterlogging and poor drainage on site, leading to match cancellations during periods of poor weather.	It is recommended that the club are supported in establishing suitable maintenance funds to address the issues of inadequate artificial drainage on site.	Marple RFC RFU	Cost of requirements to be established through further feasibility work.	Medium	Medium
			The changing rooms at the club are adequate but do not allow the club to grow further, nor provide a high-quality experience to players.	Work with the club to refurbish the existing changing rooms, to improve the overall quality of the ancillary facility	Marple RFC RF	Cost of requirements to be established through further feasibility work.	Short	Low
Bramhall and Cheadle Hulme South								
Buttersfield	Bramhall and Cheadle Hulme South	Rugby- Enhance	There is currently no demand identified at this site but 2 senior pitches present, with a deficit of rugby provision across the rest of the study area and sub-area	Invest in a more robust maintenance regime at the site and explore using the site to offset overplay present at Stockport RFC.	RFU SMBC	Work required to be established through IOG assessment.	Short	Medium

Site	Sub Area	Action ID/Ref	Issue / opportunity	Key Action(s)	Partners	Resources/ Costs	Timescale	Priority
Bramhall Cricket Club	Bramhall and Cheadle Hulme South	Cricket-Provide	The club has been subject to theft of maintenance equipment.	Investment into suitable storage facilities for maintenance equipment.	Bramhall Cricket Club ECB SMBC	Cost of work to be established through further feasibility work.	Medium	Low
Bruntwood Park	Bramhall and Cheadle Hulme South	Football-Provide	This is a disused site that previously had football provision on site.	Explore the feasibility of bringing this site back into use, focussing on youth 11v11 and mini football provision, through partnership with a network of local clubs.	Stockport MBC Cheshire FA FF	Cost dependent on scope of works	Short	Medium
Cheadle Hulme Ladybridge Sports and Social Club	Bramhall and Cheadle Hulme South	Cricket- Protect	The club do not currently have a length of lease suitable to access appropriate funding.	Support the club in establishing a 25year lease on site.	CHLSSC SMBC	SMBC officer time.	Short	High
Life Leisure Bramhall	Bramhall and Cheadle Hulme South	Hockey- Enhance	The site is regularly subject to anti-social behaviour, which is having a negative impact upon the AGP.	Install suitable CCTV on site, along with anti-climb paint to reduce informal access to the AGP	Life Leisure SMBC	Cost dependent on scope of works	Short	High
		Hockey- Enhance	The surface of the facility is adequate but will require resurfacing in the next two years to ensure it remains suitable for competitive hockey use.	Resurface existing sand-based facility and renovate floodlights, to ensure the facility is fit for competitive hockey.	Life Leisure EH SMBC	EH facilities support	Medium	Medium
Manchester Rugby Club	Bramhall and Cheadle Hulme South	Rugby-Enhance	The current ancillary facilities are not fit for purpose and are limiting the ability of the club to grow and attract new members	Support the club in establishing high quality ancillary provision, either through refurbishment or new build.	Manchester RFC RFU	Work required to be established through RFU consultation.	Medium	High
Stockport Rugby Club	Bramhall and Cheadle	Rugby- Enhance	The site currently has a significant deficit of grass rugby provision, due to a	Support the club in establishing artificial drainage on their	Stockport RFC RFU	Work required to be established through IOG and RFU assessment.	Medium	High

Site	Sub Area	Action ID/Ref	Issue / opportunity	Key Action(s)	Partners	Resources/ Costs	Timescale	Priority
	Hulme South		lack of carrying capacity across all pitches. The ancillary facilities on the site have received investment as part of the Olympic Legacy Fund, however there is a section of the club house that is in a poor condition and is not DDA compliant.	second site, Wallbank Road. Work with the club to improve poor quality section of existing clubhouse, incorporating female changing and a DDA compliant lift			Short	Medium
Woods Lane	Bramhall and Cheadle Hulme South	Football-Enhance	It is recommended that the site is supported to establish suitable drainage systems on site, currently the pitches have to be reconfigured around water logged areas, causing an inconvenience and reduction in pitch quality.	Investment into suitable artificial drainage on site.	SMBC FA	Work required to be established through IOG assessment.	Medium	Medium
Woodford Recreation ground	Bramhall and Cheadle Hulme South	Cricket	A local authority managed site, that has previously been used for both cricket and football but is now only used for football. The site has 3 x adult 11v11 pitches and 1 x youth 9v9 pitch. The site previously had grass cricket provision but this is now disused.	Provide facilities for casual cricketers and entry-level competition.	ECB, SMBC	Work required to be established through ECB consultation.	Medium	High
Stockport Central								
Adswood Park	Stockport Central	Football-Enhance	It is recommended that the site is supported in establishing suitable signage and bins to prevent issues regarding dog fouling on site that is reducing pitch quality as a consequence.	Investment into suitable signage and bins to prevent further dog fouling.	SMBC	Negligible	Short	High

Site	Sub Area	Action ID/Ref	Issue / opportunity	Key Action(s)	Partners	Resources/ Costs	Timescale	Priority
Bakery Bridge	Stockport Central	Football-Enhance	The site has had issues with vandalism, crime and anti-social behaviour and there is a high presence of graffiti, broken bottles and fly tipping across the site	Support the club in the procurement and installation of improved security equipment.	SMBC	Cost to be established through further security feasibility work.	Short	Medium
Brinnington Park	Stockport Central	Football-Enhance	Due to the issues of vandalism having a direct impact on site, to a negative extent, it is recommended that there is sufficient investment into suitable security provision to resolve the problem.	Investment into procurement of suitable security equipment.	SMBC	Cost to be established through further security feasibility work.	Short	Medium
Davenport Playing Fields	Stockport Central	Football-Enhance	The site has a deficit of youth 11v11 provision but has no appropriately marked out pitches.	Reconfiguration of pitches on site to ensure at least 1 x youth 11v11 pitch.	SMBC FF	Procurement of suitable goal posts.	Short	Low
Spurley Hey Football Club	Stockport Central	Football-Provide	The club has plans to introduce an additional full size pitch and a mini soccer pitch on site along with fencing and additional car parking, to better meet demand. There is a deficit of 5v5 mini soccer pitches in the Stockport central sub area, along with a lack of peak time capacity on adult 11v11 pitches	Explore the option of investing in 3G AGP provision at the site, pending further feasibility work as to whether this will have any impact on nearby facilities. If 3G provision is not suitable or advised, invest in new grass pitch provision at the site.	Spurley Hey FC FF	Procurement of land subject to requirement.	Medium	Medium
Woodbank Park	Stockport Central	Football and Cricket-Enhance	This is a disused site that previously had significant football provision on site, as well as a grass cricket square	Explore the feasibility of bringing this site back into use, focussing on youth 11v11, mini football and cricket provision, through partnership	Stockport MBC Cheshire FA FF ECB	Cost dependent on scope of works	Medium	High

Site	Sub Area	Action ID/Ref	Issue / opportunity	Key Action(s)	Partners	Resources/ Costs	Timescale	Priority
				with a network of local clubs.				
Werneth								
Bredbury St Marks Cricket Club	Werneth	Cricket-Enhance	This site is heavily over capacity, and expectedly so in the peak period. The club have issues regarding ancillary, training and boundary size, and are looking to establish a new home.	It is recommended that the club are supported in establishing a new site adjacent Bredbury Hall, where both grass and artificial provision will be present along with training facilities.	Bredbury St Marks CC ECB SMBC	Officer time from ECB and SMBC.	High	High
Gotherage Lane Playing Fields	Werneth	Football-Enhance	The site suffers from significant issues with dog fouling and antisocial behaviour. The site falls within the Hyde Bank Meadows strategic site as per GM Allocation Policy 39. The Policy sets out proposed improvements for the playing fields.	Investment into suitable signage and bins to prevent further dog fouling, along with suitable security provision.	SMBC	To be defined by further feasibility work	Short	High
Mill Lane Recreation Ground	Werneth	Football-Enhance	The site current suffers from issues with waterlogging, leading to match cancellation.	Undertake further feasibility work to explore the option of investing in artificial drainage on site, to improve pitch quality.	FF SMBC	Work required to be established through IOG assessment.	Medium	Medium
Offerton Cricket Club	Werneth	Cricket-Enhance	This cricket site has been identified as being of poor quality and has therefore been allocated 0 carrying capacity.	Engage with the club and the IOG to understand the root cause for the current quality rating of the site, as well as putting an action plan in place to improve the maintenance regime, in order to increase the carrying capacity and address issues with	ECB Offerton Cricket Club	Work required to be established through IOG assessment.	Short	Medium

Site	Sub Area	Action ID/Ref	Issue / opportunity	Key Action(s)	Partners	Resources/ Costs	Timescale	Priority
				provision in the sub area.				
Werneth School	Werneth	Hockey-Enhance	The AGP on site is not currently used for community hockey however it is used for casual football. There is an opportunity for this pitch to be used as a secondary pitch for SBHC.	Engage with the school and local hockey club (SBHC) to increase the usage of this facility as a hockey site.	Werneth School England Hockey	None	Medium	Medium
Stepping Hill								
Green Lane Recreation Ground	Stepping Hill	Football-Enhance	The site has a deficit of youth 11v11 provision but no dedicated pitches to meet demand.	Reconfigure at least two existing grass pitches to youth 11v11.	FF SMBC	Procurement of suitable goal posts.	Short	High
Jacksons Lane Recreation Ground	Stepping Hill	Football- Provide	The site is used by a growing club which currently operates from the storage container on site.	Support the club with its aspirations to develop a new ancillary facility.	SMBC	Cost subject to further feasibility work.	Medium	Medium
Stockport Georgians Cricket Club	Stepping Hill	Cricket- Enhance	The site has been subject to significant issues regarding security and anti-social behaviour on site.	Investment into suitable CCTV and expert support from ECB facilities team.	Stockport Georgians CC SMBC	ECB office time	Short	Medium
Torkington Park	Stepping Hill	Football-Enhance	The site is heavily used for community use football across a number of age groups, however the site suffers from drainage issues and match cancellations during periods of poor weather.	Explore the option of investing in 3G AGP provision at the site, pending further feasibility work as to whether this will have any impact on nearby facilities. If 3G provision is not suitable or advised, invest in a more robust maintenance regime on site, to increase carrying capacity.	SMBC FA	£1,000,000, subject to further feasibility work.	Long	Medium

Section 6: Delivering the Playing Pitch Strategy



6 Delivering the Playing Pitch Strategy

6.1.1 To facilitate the development of sport and physical activity across Stockport, it is advised that the Steering Group, set up as part of the Playing Pitch Strategy project, continues to work together to deliver the recommendations defined as part of this strategy.

6.1.2 The success of a PPS will be determined by how it is used. It is recommended that the delivery of the strategy is led by the Council, with close support by the steering group that has been developed as part of this project. Further guidance is provided in Sport England's PPS Guidance in the form of the Stage E commentary and associated checklist.

6.2 Keeping the PPS relevant and up-to-date

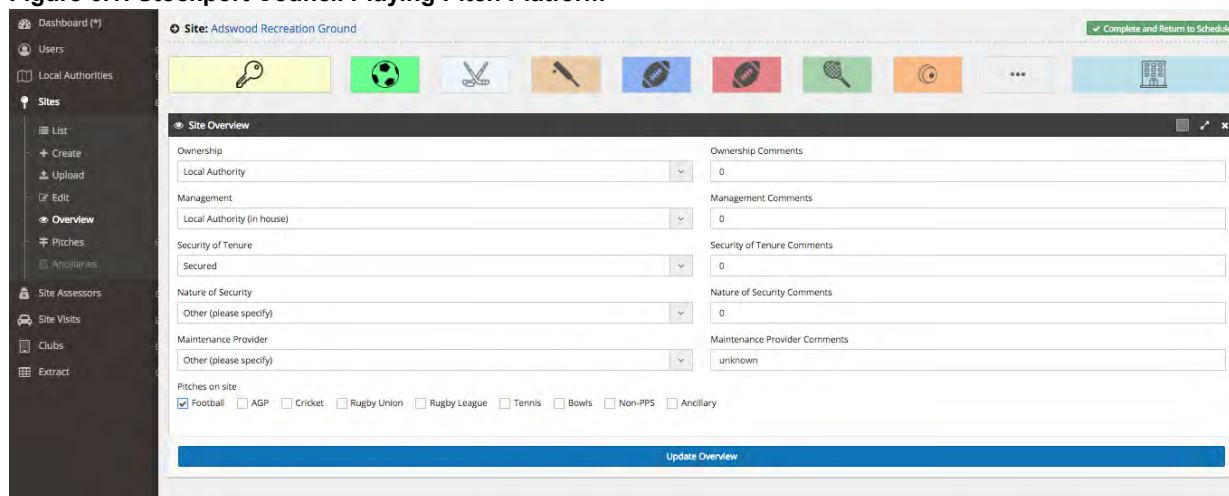
6.2.1 To ensure that the Playing Pitch Strategy stays relevant and continues to support stakeholders in the delivery of sport and physical activity facility investment and development, an annual review should be undertaken. This review, which if undertaken regularly will have a reduced scope than the full PPS, will allow the steering group to review progress against the PPS recommendations and action plan. The review will also identify any emerging issues and apply any lessons learnt through recent development or investment projects.

6.2.2 To ensure that the recommendations and action plan identified within this document are delivered effectively and efficiently using a collaborative process among the Steering Group, it is recommended that the following process is followed for monitoring delivery:

- Internal Stockport MBC working group to meet monthly to identify progress to date and upcoming priority actions. This arrangement is to be reviewed after 6 months to identify whether it is appropriate
- Full PPS steering group to meet every 6 months, with target periods being the beginning of the winter season (September) and the beginning of the summer season (March). Where special circumstances arise, such as a high profile development opportunity or major pitch issue, it may be appropriate for the Steering Group to meet outside of these windows.

6.2.3 Through the development of the PPS, data has been stored and analysed on the 4global Playing Pitch Strategy Platform, which has up to date supply and demand data for pitch sports across the Borough. This data is available to Stockport MBC and it is recommended that this is used as the starting point for future strategy refresh projects.

Figure 6.1: Stockport Council Playing Pitch Platform



6.2.4 In the short term, it is advised that the Council sets up an implementation group (which should be a continuation of steering group set up as part of the PPS), to co-ordinate preparation of a short-term action plan, as well as undertaking further sub-regional needs assessment for major cross-boundary development projects. The PPS has identified, on a site by site and sub-area level, the needs for pitch and ancillary provision across Stockport. Where the current level of supply does not meet the current or future needs of residents for specific sports, pitch typologies and ancillaries have been identified as requiring further capacity to meet demand.

6.2.5 In order to provide this additional capacity, guidance has been provided as to whether the steering group and partner organisations should look to:

- Enhance existing pitches to increase their capacity and ensure adequate maintenance to maintain the higher use, and/or
- Secure greater community access to sites and undertake necessary works to allow for such use to occur, and/or
- Provide new playing pitches on new sites (natural or artificial grass pitches).

6.2.6 Where the third option has been recommended, further guidance is available from Sport England and National Governing Bodies to advise on the best course of action for local authorities and delivery organisations.

6.3 Using the PPS to identify the requirement for new pitches

6.3.1 As identified in the needs assessment, grass pitches are assigned different levels of capacity based on the quality and typology (size) of each pitch. For example, the table overleaf shows the carrying capacity for each football, cricket and rugby pitch type and how this changes depending on the quality of the pitch.

6.3.2 As a starting point for calculating the number of pitches that are required to meet future demand, the future deficit of pitch provision for each pitch typology can be divided by the carrying capacity of the relevant good quality pitch, to identify how many new pitches would be required to meet demand

Table 6.1: Carrying capacity per football and cricket pitch type. All figures in MES

Sport	Quality score	Good quality	Standard quality	Poor quality
Football	Adult pitches	3 MES	2 MES	1 MES
	Youth pitches	4 MES	2 MES	1 MES
	Mini pitches	6 MES	4 MES	2 MES
Cricket	One grass wicket	5 per season	4 per season	0
	One synthetic wicket	60 per season	60 per season	0
Lacrosse*	Adult pitch	3 MES	2 MES	1 MES

*There is not a nationally agreed calculation for applying match equivalent sessions of supply, depending on the quality of lacrosse pitches. This ratio has been applied using local knowledge and through consultation with England Lacrosse

Table 6.2: Carrying capacity per rugby pitch type. All figures in MES

Drainage	Maintenance		
	Poor (M0)	Standard (M1)	Good (M2)
Natural Inadequate (D0)	0.5	1.5	2
Natural Adequate (D1)	1.5	2	3
Pipe Drained (D2)	1.75	2.5	3.25
Pipe and Slit Drained (D3)	2	3	3.5

- 6.3.3 It is key to note that it is not pragmatic nor cost-effective to meet all deficit through the provision of new pitches. This is due to constraints such as lack of space, high capital cost for drainage infrastructure and high ongoing costs for maintenance.
- 6.3.4 As a result, it is important that the PPS Steering Group use the outputs of the PPS to identify the most effective way of meeting current and future demand. In all likelihood, this will be through a combination of investment into artificial grass pitch provision, improvement of maintenance at current sites and where possible, the development of new pitch provision through multi-pitch hub site investment.
- 6.3.5 It should be noted that the supply and demand for hockey is not calculated using MES. Instead the available hours for training and matchplay are compared with the relevant demand to provide a supply and demand balance.

7 Glossary of terms

7.1.1 In order to fully understand the PPS, 4global have created a glossary detailing key terms and phrases mentioned throughout. The glossary is detailed below, along with appropriate definitions;

Acronyms

- **3G AGP:** Third Generation Artificial Grass Pitch
- **4g:** 4global Consulting
- **AGP:** Artificial Grass Pitch(es)
- **APS:** Active People Survey(s)
- **CC:** Cricket Club
- **CIL:** Community Infrastructure Levy
- **CSP:** County Sports Partnership
- **ECB:** England and Wales Cricket Board
- **EH:** England Hockey
- **FA:** Football Association
- **FC:** Football Club
- **FE:** Further Education
- **GIS:** Geographical Information Systems
- **HC:** Hockey Club
- **HE:** Higher Education
- **IOG:** Institute of Groundsmanship
- **JFC:** Junior Football Club
- **LDF:** Local Development Framework
- **LMS:** Last Man Stands
- **LSOA:** Lower Layer Super Output Area
- **MES:** Match equivalent sessions
- **NPPF:** National Planning Policy Framework
- **PPS:** Playing Pitch Strategy
- **PQS:** Performance Quality Standard
- **RFU:** Rugby Football Union
- **RUFC:** Rugby Union Football Club
- **S106:** Section 106 Agreement
- **U:** Under.

Phrases

7.1.2 **National Governing Body of Sport (NGB)** - typically these are independent, self-appointed organisations that govern their sports through the common consent of their sport. Sport England has a recognition process for NGBs that aims to identify a single lead NGB structure which governs a sport at UK, GB or home country level.

- 7.1.3 **Unsecured Community Use** - these are pitches that are currently used or available for community-use, however there is no secure management/usage agreement in place.
- 7.1.4 **Secured Community Use** - these pitches will be managed as either; a 'play & play' site by the local authority or leisure trust, by a specific sports club or Parish Council, or by an education establishment with secure community-use agreements in place.
- 7.1.5 **Team Generation Rate** – Provides an indication of how many people it may take to generate a team. A TGR can be calculated by dividing the current population within an age group for a sport by the number of teams in the area within that age group. This is then used to calculate the number of teams that will be required in the future, to allow for future population growth or reduction.
- 7.1.6 **Displaced demand** generally relates to play by teams or other users of playing pitches from within the study area (i.e. from residents of the study area) which takes place outside of the area. This may be due to issues with the provision of pitches and ancillary facilities in the study area, just reflective of how the sports are played (e.g. at a central venue for the wider area) or due to the most convenient site for the respective users just falling outside of the local authority/study area.
- 7.1.7 **Unmet demand** is demand that is known to exist but unable to be accommodated on current supply of pitches. This could be in the form of a team with access to a pitch for matches but nowhere to train or vice versa. This could also be due to the poor quality and therefore limited capacity of pitches in the area and/or a lack of provision and ancillary facilities which meet a certain standard of play/league requirement. League secretaries may be aware of some unmet demand as they may have declined applications from teams wishing to enter their competitions due to a lack of pitch provision which in turn is hindering the growth of the league.
- 7.1.8 **Latent demand** is demand that evidence suggests may be generated from the current population should they have access to more or better provision. This could include feedback from a sports club who may feel that they could set up and run an additional team if they had access to better provision.
- 7.1.9 **Future demand** is an informed estimate made of the likely future demand for pitches in the study area. This is generally based on the most appropriate current and future population projections for the relevant age and gender groupings for each sport. Key trends, local objectives and targets and consultation also inform this figure.
- 7.1.10 **Casual use or other use** could take place on natural grass pitches or AGPs and include:
- Regular play from non-sports club sources (e.g. companies, schools, fitness classes)
 - Infrequent informal/friendly matches
 - Informal training sessions
 - More casual forms of a particular sport organised by sports clubs or other parties
 - Significant public use and informal play, particularly where pitches are located in parks/recreation grounds.

- 7.1.11 **Carrying capacity** is the amount of play a site can regularly accommodate (in the relevant comparable unit) for community use without adversely affecting its quality and use. This is typically outlined by the NGB.
- 7.1.12 **Overplay** is when a pitch is used over the amount that the carrying capacity will allow, (i.e. more than the site can accommodate). Pitches have a limit of how much play they can accommodate over a certain period of time before their quality, and in turn their use, is adversely affected.
- 7.1.13 **Spare capacity** is the amount of additional play that a pitch could potentially accommodate in addition to current activity. There may be reasons why this potential to accommodate additional play should not automatically be regarded as actual spare capacity, for example, a site may be managed to regularly operate slightly below its carrying capacity, to ensure that it can cater for a number of friendly matches and training activity. This needs to be investigated before the capacity is deemed actual spare capacity.
- 7.1.14 **Match equivalent sessions** is an appropriate comparable unit for pitch usage. For football, rugby union and lacrosse, pitches should relate to a typical week within the season and one match = one match equivalent session if it occurs every week or 0.5 match equivalent sessions if it occurs every other week (i.e. reflecting home and away fixtures). For cricket pitches, matches per season is used, as all supply and demand analysis is undertaken over the period of a season.
- 7.1.15 **Rush Hockey** is a five-a-side version of hockey that can be played indoors or outdoors. It uses larger, lighter balls and is seen by England Hockey as an entry point into the formal game.
- 7.1.16 **Mash-up Football** aims to inspire and empower young people through a fun, recreational football playing opportunity that has been specifically designed for 14-16 year olds.
- 7.1.17 **Last Man Stands Cricket** is a short form of the game with only 6 players, that can be played over a short period (2-3 hours) and is accessible to all types and abilities of cricket player.
- 7.1.18 **Cage Cricket** is a dynamic format of cricket played in an enclosed space at a fast pace and embracing cutting edge technology.
- 7.1.19 **Touch Rugby** is a minimal contact sport that is played throughout the world by men, women and children of all ages and skill levels. Touch appeals to both sports enthusiasts as well as those looking for an 'alternative way' of getting or keeping fit through a fun game, which needs minimal prior knowledge or equipment.

SHAPING THE FUTURE OF SPORT



4global Consulting

Building 3, Chiswick Business Park

566 Chiswick High Road

London, W4 5YA